

LOC/DME I-HPN	APP CRS	Rwy Idg
<b>109.7</b>	<b>163°</b>	<b>6549</b>
Chan <b>34</b>		TDZE <b>439</b>
		Apt Elev <b>439</b>

ILS or LOC RWY 16

WESTCHESTER COUNTY (HPN)

▼

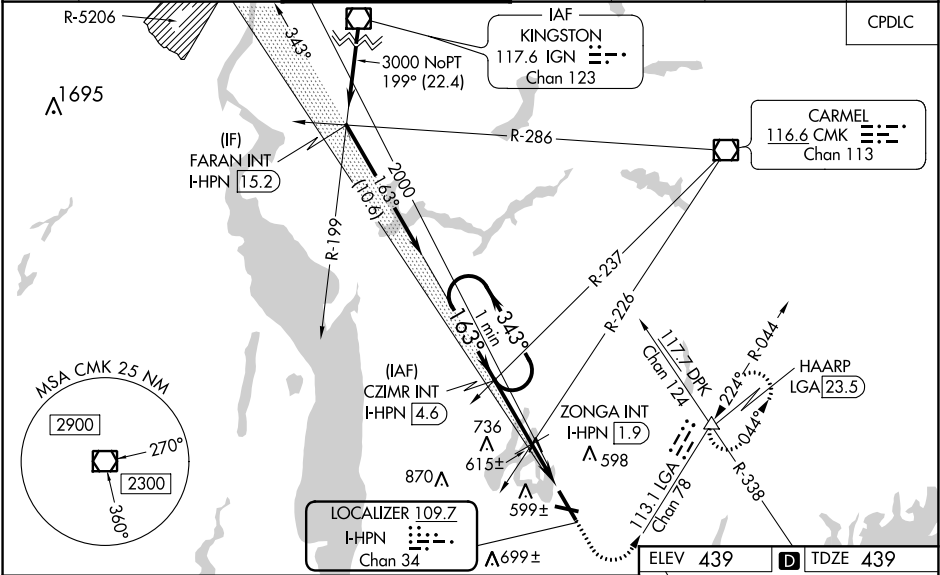
▲

Circling Rwy 11, 29 NA at night.  
For inop ALS, increase S-LOC 16  
Cats C/D visibility to 1½ SM and  
ZONGA FIX minimums S-LOC 16  
Cats C/D visibility to 1¾ SM.

MALSR

MISSED APPROACH: Climb to 1000  
then climbing left turn to 3000 on heading  
150° and LGA VOR/DME R-044 to  
HAARP INT/LGA 23.5 DME and hold,  
continue climb-in-hold to 3000.

D-ATIS	NEW YORK APP CON	WESTCHESTER TOWER ★	GND CON	CLNC DEL	CLNC DEL	UNICOM
<b>133.8</b>	<b>120.8 126.4 257.65</b>	<b>118.575</b> (CTAF) <b>284.65</b>	<b>121.825</b>	<b>127.25</b>	<b>126.4</b> (when twr closed)	<b>122.95</b>



One Minute Holding Pattern

CATEGORY	A	B	C	D
S-ILS 16	639/18 200 (200-½)			
S-LOC 16	1100/24	661 (700-½)	1100-1½	661 (700-½)
CIRCLING	1100-1	661 (700-1)	1100-1¾ 661 (700-1¾)	1200-2½ 761 (800-2½)
ZONGA FIX MINIMUMS (DUAL VOR RECEIVERS OR DME REQUIRED)				
S-LOC 16	940/24	501 (600-½)	940/55	501 (600-1)
CIRCLING	980-1	541 (600-1)	1080-1¾ 641 (700-¾)	1200-2½ 761 (800-2½)

REIL Rwy 11 and 34

HIRL Rwy 16-34

MIRL Rwy 11-29

TDZ/CL Rwy 16

FAF to MAP 4.7 NM

Knots	60	90	120	150	180
Min:Sec	4:42	3:08	2:21	1:53	1:34