
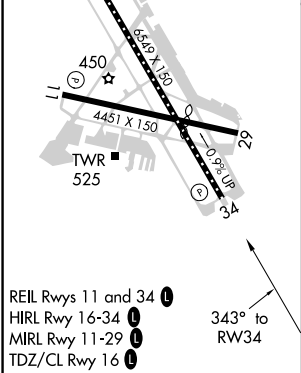
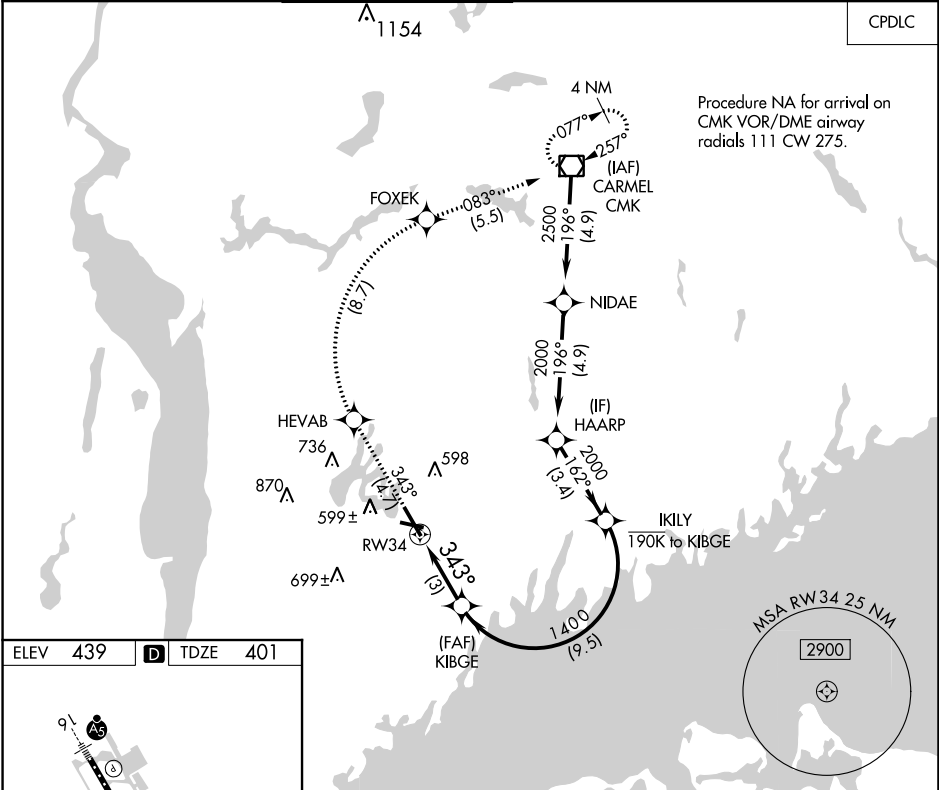


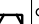
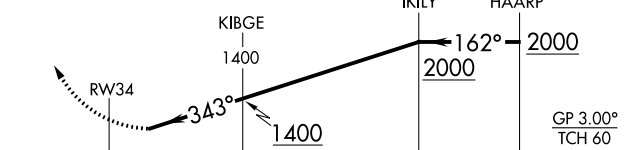


APP CRS	Rwy Idg	6549
343°	TDZE	401
	Apt Elev	439

RNAV (RNP) Z RWY 34  
WESTCHESTER COUNTY (HPN)

	For uncompensated Baro-VNAV systems, procedure NA below -14°C (7°F) or above 54°C (130°F). RF required. GPS required.			MISSED APPROACH: Climb to 3000 on track 343° to HEVAB, right turn to FOXEK, then on track 083° to CMK VOR/DME and hold.		
D-ATIS 133.8	NEW YORK APP CON 120.8 126.4 257.65	WESTCHESTER TOWER ★ 118.575 (CTAF) 0 284.65	GND CON 121.825	CLNC DEL 127.25	CLNC DEL 126.4 (when twr closed)	UNICOM 122.95



3000	↑ tr 343°	HEVAB 	FOXEK 	tr 083°	CMK 	VGSI and RNAV glidepath not coincident (VGSI Angle 3.00/TCH 56).
						
CATEGORY	A		B		C	D
RNP 0.30 DA	788-1½		387 (400-1½)			
AUTHORIZATION REQUIRED						

NE-2, 31 DEC 2020 to 28 JAN 2021

NE-2, 31 DEC 2020 to 28 JAN 2021