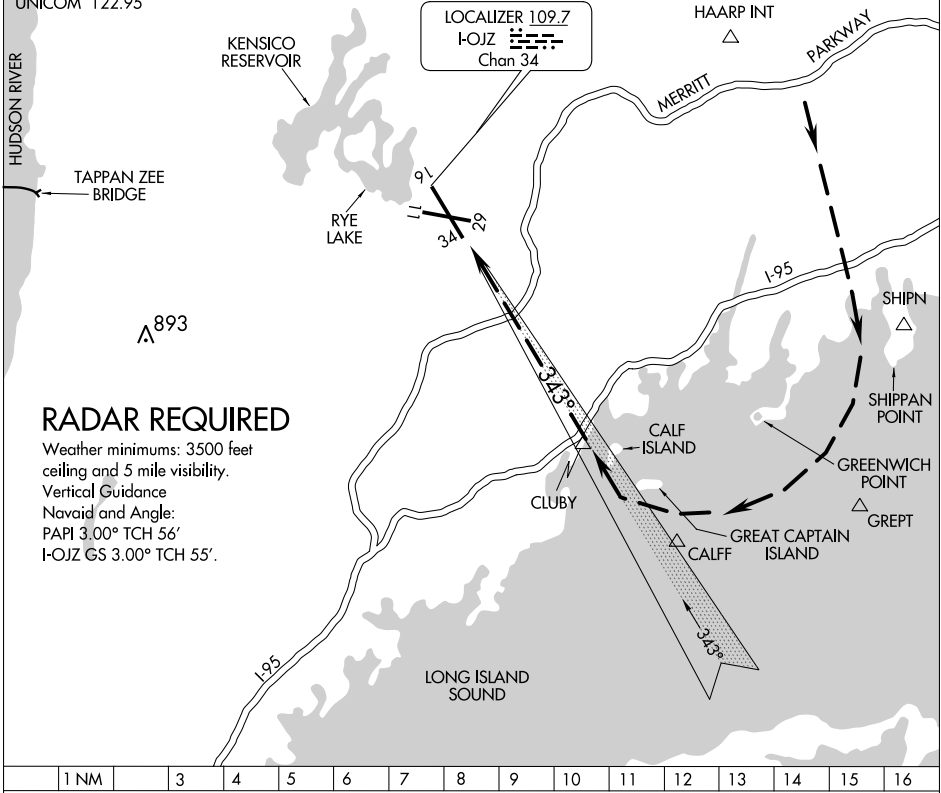


D-ATIS 133.8
NEW YORK APP CON
120.8 126.4 257.65
WESTCHESTER TOWER ★
118.575 (CTAF) 0 284.65
GND CON
121.825
CLNC DEL
127.25
NEW YORK CLNC DEL
126.4 (when tower closed)
CPDLC
UNICOM 122.95



RADAR REQUIRED

Weather minimums: 3500 feet ceiling and 5 mile visibility.
Vertical Guidance
Navaid and Angle:
PAPI 3.00° TCH 56'
I-OJZ GS 3.00° TCH 55'.

1 NM	3	4	5	6	7	8	9	10	11	12	13	14	15	16
------	---	---	---	---	---	---	---	----	----	----	----	----	----	----

SOUND VISUAL RWY 34

When cleared for a Sound Visual Approach RWY 34, maintain 3000 feet until south of the shoreline on base leg (2000 feet when authorized by ATC).

Fly depicted track to remain offshore of Greenwich Point.