

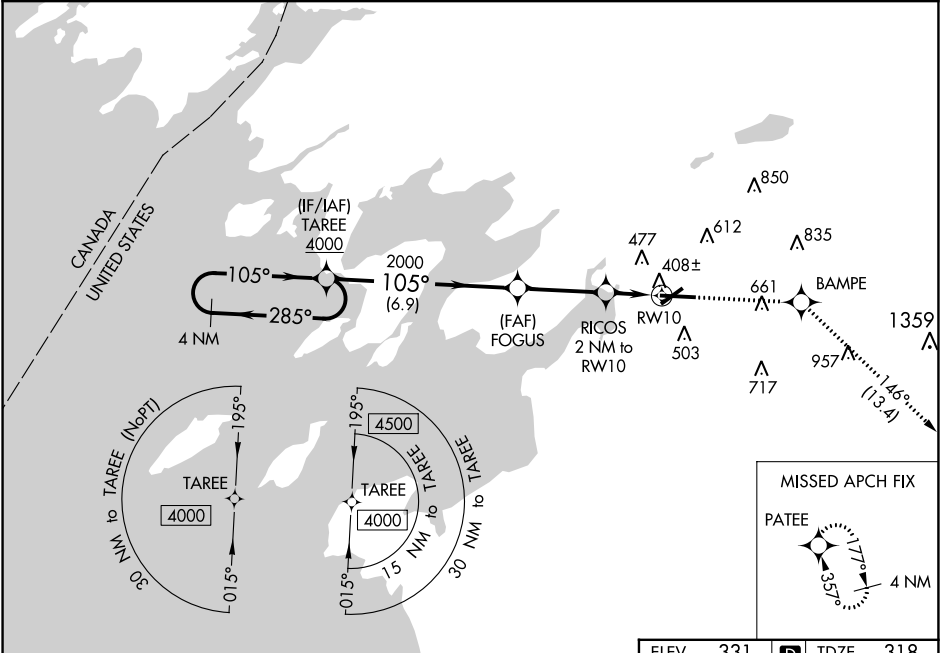
WAAS CH 53522 W10A	APP CRS 105°	Rwy Idg TDZE Apt Elev	7001 318 331
--	------------------------	-----------------------------	---

RNAV (GPS) RWY 10

WATERTOWN INTL (ART)

RNP APCH.	MISSED APPROACH: Climb to 3600 direct BAMPE and on track 146° to PATEE and hold.
<div><div>▲</div><div>For uncompensated Baro-VNAV systems, LNAV/VNAV NA below -20°C or above 54°C. Rwy 10 helicopter visibility reduction below ¾ SM NA.</div><div>❄ -37°C</div></div>	

ASOS 132.325	GTB ATIS 119.525	WHEELER-SACK APP CON 124.875 257.6	CLNC DEL 120.8	UNICOM 123.0 (CTAF) 0
------------------------	----------------------------	--	--------------------------	---------------------------------



4 NM Holding Pattern		TAREE 4000	3600	BAMPE	tr 146°	PATEE
4000		FOGUS	RICOS 2 NM to RW10	*LNAV only.		
GP 3.00° TCH 47		2000	*1 NM to RW10	RW10	*980	
		6.9 NM	3.2 NM	1 NM	1 NM	
CATEGORY	A	B	C	D		
LPV DA		568-¾	250 (300-¾)			
LNAV/VNAV DA		578-¾	260 (300-¾)			
LNAV MDA		660-1	342 (400-1)			
CIRCLING	960-1	629 (700-1)	980-1¾ 649 (700-1¾)	1080-2½ 749 (800-2½)		

ELEV 331

TDZE 318

105° to RW10

373

0.3% UP

0.5% UP

7001 X 150

28

REIL Rwy 28 0

HIRL Rwy 7-25 0

MIRL Rwy 10-28 0