

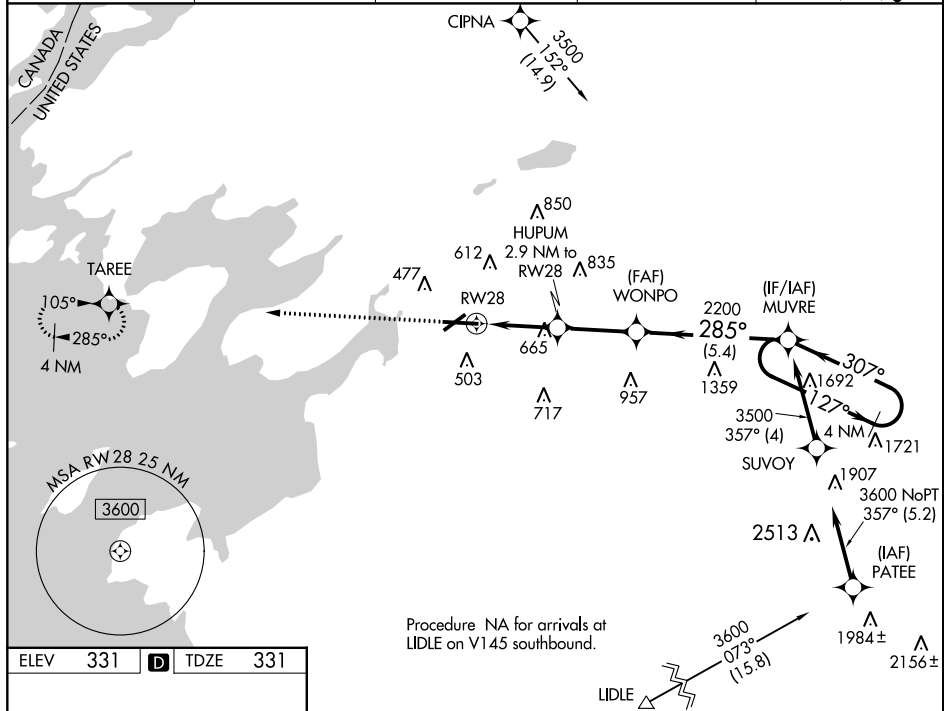
WAAS CH 82322 W28A	APP CRS 285°	Rwy Idg 7001 TDZE 331 Apt Elev 331
--	------------------------	---

RNAV (GPS) RWY 28
WATERTOWN INTL (ART)

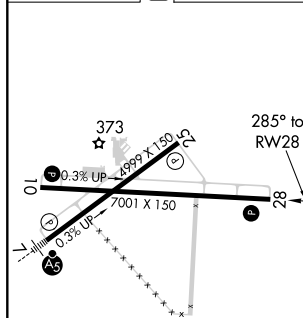
For uncompensated Baro-VNAV systems, procedure NA below -20°C (-4°F) or above 54°C (130°F). Baro-VNAV and VDP NA when using Wheeler-Sack AAF altimeter setting. DME/DME (R30.0) NA. When local altimeter setting not received, use Wheeler-Sack AAF altimeter setting; increase LPV DA to 663 feet and all visibilities to 1½ SM; LNAV/VNAV DA to 934 feet and all visibilities to 2½ SM. Increase all MDA 100 feet and LNAV Cat C and D visibility ½ SM. Circling Cat C ½ SM and Cat D ¼ SM. Rwy 28 helicopter visibility reduction below ¾ SM NA.

MISSED APPROACH:
Climb to 2400 direct
TAREE and hold.

ASOS 132.325	GTB ATIS 119.525	WHEELER-SACK APP CON 124.875 257.6	CLNC DEL 120.8	UNICOM 123.0 (CTAF) 0
-----------------	---------------------	---------------------------------------	-------------------	--------------------------



ELEV	331	D	TDZE	331
------	-----	----------	------	-----



REIL Rwy 28 **L**
HIRL Rwy 7-25 **L**
MIRL Rwy 10-28 **L**

2400 ↑	TAREE ✦				
* LNAV only.					
2.9 NM to RW28					
* 1.7 NM to RW28					
RW28					
1.7					
1.2					
2.8 NM					
5.4 NM					
A		B		C	
CATEGORY	DA	B		C	
LPV	DA	581- $\frac{3}{4}$		250 (300- $\frac{3}{4}$)	
LNAV/ VNAV	DA	852-1 $\frac{3}{4}$		521 (600-1 $\frac{3}{4}$)	
LNAV MDA		920-1	589 (600-1)	920-1 $\frac{3}{4}$	589 (600-1 $\frac{3}{4}$)
C CIRCLING		960-1	629 (700-1)	980-1 $\frac{3}{4}$ 649 (700-1 $\frac{3}{4}$)	1080-2 $\frac{1}{2}$ 749 (800-2 $\frac{1}{2}$)

WATERTOWN INTL (ART)
RNAV (GPS) RWY 28