



RNAV (GPS) RWY 22
ATLANTIC CITY INTL (ACY)

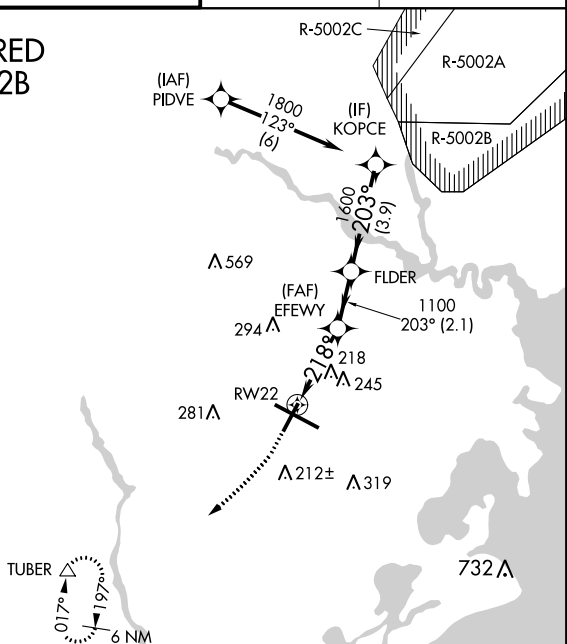
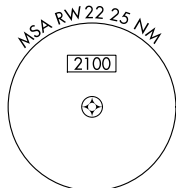
| | | |
|--|--|---|
|  Δ SR | For uncompensated Baro-VNAV systems, LNAV/VNAV NA below -14°C (7°F) or above 54°C (130°F). Rwy 22 helicopter visibility reduction below ¾ SM NA. DME/DME RNP-0.3 NA. | MISSED APPROACH: Climb to 600 then climbing right turn to 2000 direct TUBER and hold. |
|--|--|---|

| | | | | |
|----------------|-----------------------|---------------------|-------------|----------------|
| ATIS | ATLANTIC CITY APP CON | ATLANTIC CITY TOWER | GND CON | CLNC DEL |
| 125.725 316.15 | 124.6 327.125 | 120.3 239.0 | 121.9 284.6 | 127.85 353.775 |

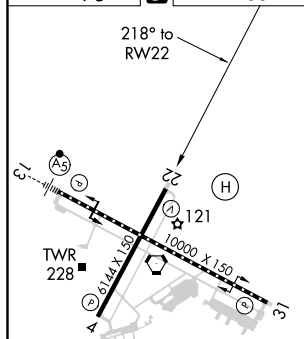
**RADAR REQUIRED
WHEN R-5002B
IS ACTIVE.**

CEDAR LAKE VCN 

Procedure NA for arrival on VCN VORTAC
airway radials 066 CW 160.



| | | |
|---------|----------|---------|
| ELEV 75 | D | TDZE 68 |
|---------|----------|---------|



TDZ/CL Rwy 13
HIRL Rwy 4-22 and 13-31
REIL Rwy 31

*RNAV only.

600 2000 TUBER

RW22

*1.3 NM to RW22

EFWY 1100

FLDER

KOPCE

1800

218°

203°

1600

GP 3.00° TCH 5T

1.3 NM 1.8 NM 2.1 NM 3.9 NM

| CATEGORY | A | B | C | D | E |
|--------------|-------------------|---|---------------------------|-------------------|---------------------------|
| LPV DA | 364-1 | | 296 (300-1) | | |
| RNAV/VNAV DA | 356-7/8 | | 288 (300-7/8) | | |
| RNAV MDA | 520-1 452 (500-1) | | 520-1 1/8 452 (500-1 1/8) | | |
| CIRCLING | 540-1 465 (500-1) | | 540-1 1/2 465 (500-1 1/2) | 640-2 565 (600-2) | 760-2 1/2 685 (700-2 1/2) |

ATLANTIC CITY, NEW JERSEY
Amdt 4B 12OCT17

39°27'N-74°35'W

ATLANTIC CITY INTL (ACY)
RNAV (GPS) RWY 22

NE-2, 31 DEC 2020 to 28 JAN 2021