

WAAS CH 62910 W25A	APP CRS 249°	Rwy Idg 5299 TDZE 1721 Apt Elev 1723
----------------------------------------	------------------------	-----------------------------------------------------------------

RNAV (GPS) RWY 25

CHAUTAUQUA COUNTY/JAMESTOWN (JHW)

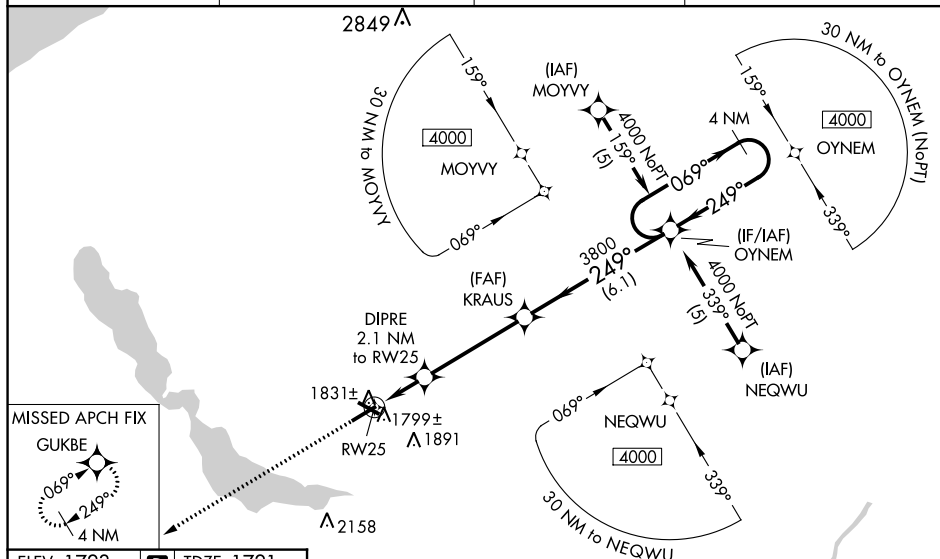
▼ For uncompensated Baro-VNAV systems, LNAV/VNAV NA below -18°C (0°F) or above 54°C (130°F), DME/DME RNP-0.3 NA. When local altimeter setting not received, use Dunkirk altimeter setting: increase LPV DA to 2113 feet and visibility all Cats ½ SM, LNAV/VNAV DA to 2246 feet and visibility all Cats ½ SM; increase all MDAs 200 feet and visibility LNAV Cat C ½ SM, LNAV Cat D ¾ SM, Circling Cat C ½ SM and Circling Cat D ¾ SM. For inoperative MALSR, increase LNAV Cat D visibility to 1¼ mile. For inoperative MALSR when using Dunkirk altimeter setting, increase LPV all Cats visibility to 1½ mile. Baro-VNAV and VDP NA when using Dunkirk altimeter setting. Circling to Rwy 13/31 NA at night.

MALSR

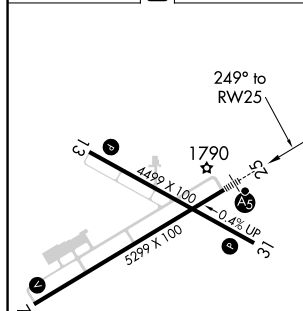


MISSED APPROACH:
Climb to 4000 direct
GUKBE and hold.

AWOS-3PT 118.425	BUFFALO APP CON ★ 126.05	CLNC DEL 126.05	UNICOM 122.7 (CTAF) ①
----------------------------	------------------------------------	---------------------------	---------------------------------



ELEV 1723	D	TDZE 1721
-----------	----------	-----------



HOLDING PATTERN DATA:

CATEGORY	A	B	C	D
LPV DA	1921- $\frac{1}{2}$	200 (200- $\frac{1}{2}$)		
LNAV/VNAV DA	2054- $\frac{3}{4}$	333 (400- $\frac{3}{4}$)		
LNAV MDA	2100- $\frac{1}{2}$	379 (400- $\frac{1}{2}$)		2100-1 379 (400-1)
C CIRCLING	2200-1	477 (500-1)	2240-1 $\frac{1}{2}$ 517 (600-1 $\frac{1}{2}$)	2340-2 617 (700-2)