

WAAS CH 62815 W32A	APP CRS 325°	Rwy Idg TDZE 1099 Apt Elev 1099
--	------------------------	---

RNAV (GPS) RWY 32

ITHACA TOMPKINS INTL (ITH)

RNP APCH

▼

23

-19°C

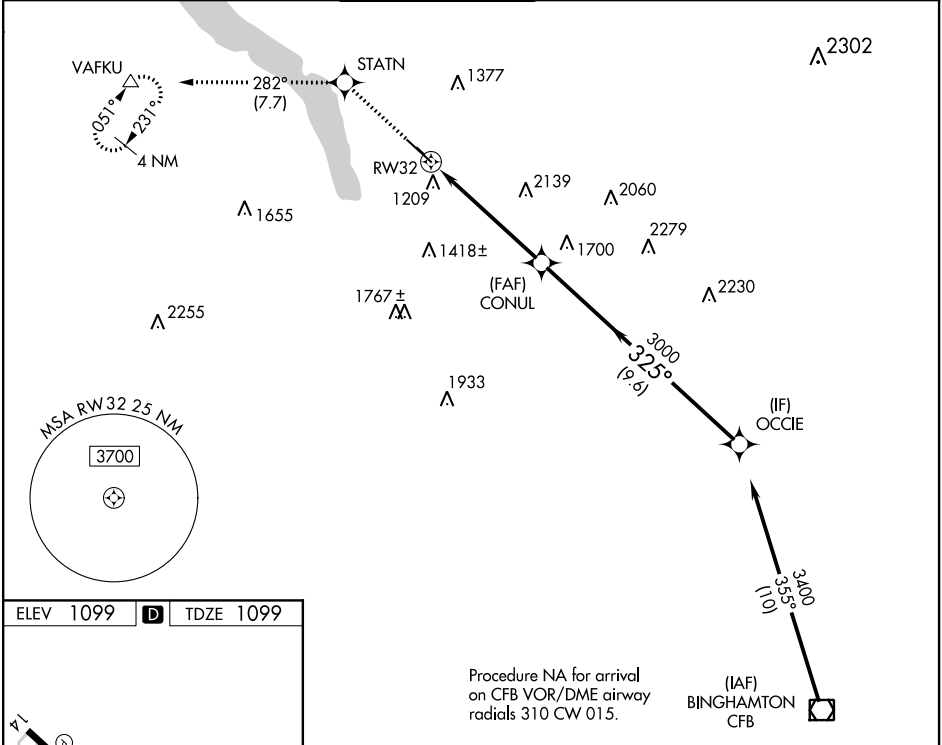
Circling NA to Rwy 15 and 33. Inop table does not apply to LNAV Cat A. Rwy 32 helicopter visibility reduction below ¾ SM NA. When local altimeter setting not received, use Elmira altimeter setting and increase all DA 84 feet and all MDA 100 feet. For inop MALSR, increase LNAV Cat B visibility ¼ mile. For inop MALSR, when using Elmira altimeter setting, increase LPV all Cats visibility to RVR 6000, and increase LNAV Cat B visibility to 1½.

MALSR

MISSED APPROACH:

Climb to 3700 direct STATN and on track 282° to VAFKU and hold.

ATIS 125.175	ELMIRA APP CON ★ 124.3 257.8	ITHACA TOWER ★ 119.6 (CTAF) 0	GND CON 121.8	CLNC DEL 121.8	UNICOM 122.95
------------------------	--	---	-------------------------	--------------------------	-------------------------



ELEV 1099 **D** TDZE 1099

3700	STATN	tr 282°	VAFKU	OCCIE	
* LNAV only		* 3.4 NM to RW32		GP 3.20° TCH 54	
RW32		CONUL	3000	325°	3400
3.4 NM		2 NM	9.6 NM		
CATEGORY	A	B	C	D	
LPV DA	1385/40		286 (300-¾)		
LNAV MDA	2300/60 1201 (1300-1¼)		2300-2½ 1201 (1300-2½)		
C CIRCLING	2300-1¼ 1201 (1300-1¼)	2300-1½ 1201 (1300-1½)	2300-3 1201 (1300-3)	2440-3 1341 (1400-3)	