

WAAS CH 42520 W23A	APP CRS 229°	Rwy Idg TDZE Apt Elev	6333 1663 1663
--	------------------------	-----------------------------	---

RNAV (GPS) RWY 23
ADIRONDACK RGNL (SLK)

RNP APCH

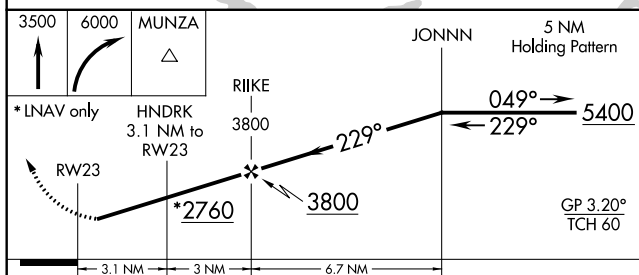
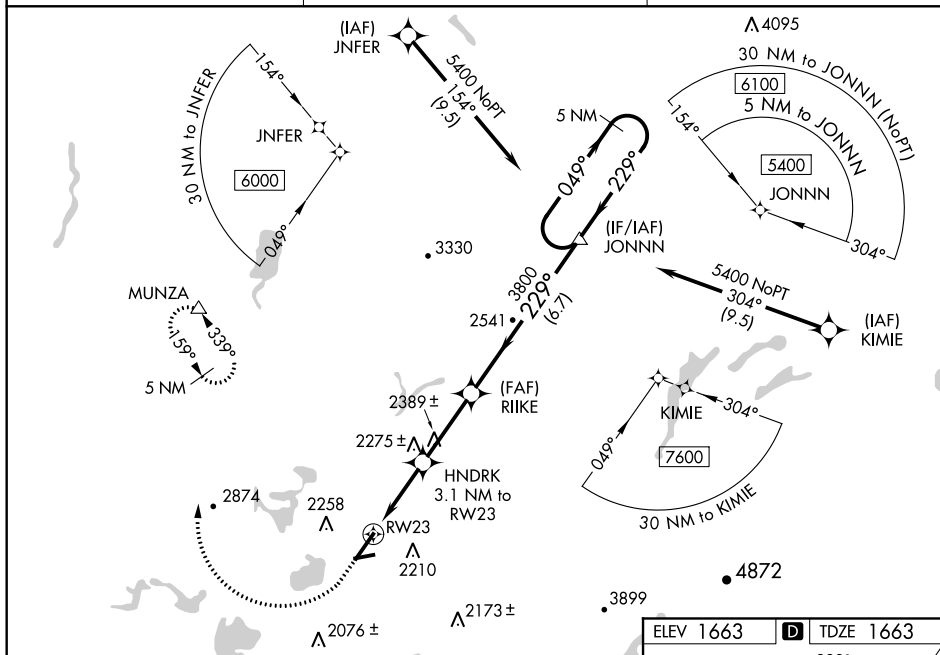
T Circling to Rwy 5, 9, 27 NA at night. For uncompensated Baro-VNAV systems, LNAV/VNAV NA below -18°C (0°F) or above 54°C (130°F).
A Rwy 23 helicopter visibility reduction below $\frac{3}{4}$ SM NA. For inop ALS, increase LNAV/VNAV all Cats visibility to $1\frac{3}{8}$ SM.
❄ -28°C

MALSR

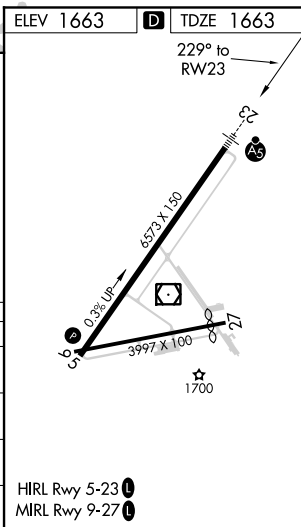


MISSED APPROACH: Climb to 3500 then climbing right turn to 6000 direct MUNZA and hold, continue climb-in-hold to 6000.

ASOS 124.175	BOSTON CENTER 120.35 342.25	UNICOM 123.0 (CTAF) 0
------------------------	---------------------------------------	---------------------------------



CATEGORY	A	B	C	D
LPV DA	1863- ³ / ₄ 200 (200- ³ / ₄)			
LNAV/ VNAV DA	2150-1 487 (500-1)			
LNAV MDA	2640- ³ / ₄ 977 (1000- ³ / ₄)	2640-1 977 (1000-1)	2640-2½	977 (1000-2½)
C CIRCLING	2640-1½ 977 (1000-1½)	2660-1½ 997 (1000-1½)	2660-3 997 (1000-3)	2680-3 1017 (1100-3)



RNAV (GPS) RWY 23

NE-2, 31 DEC 2020 to 28 JAN 2021