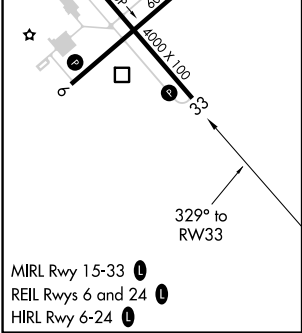
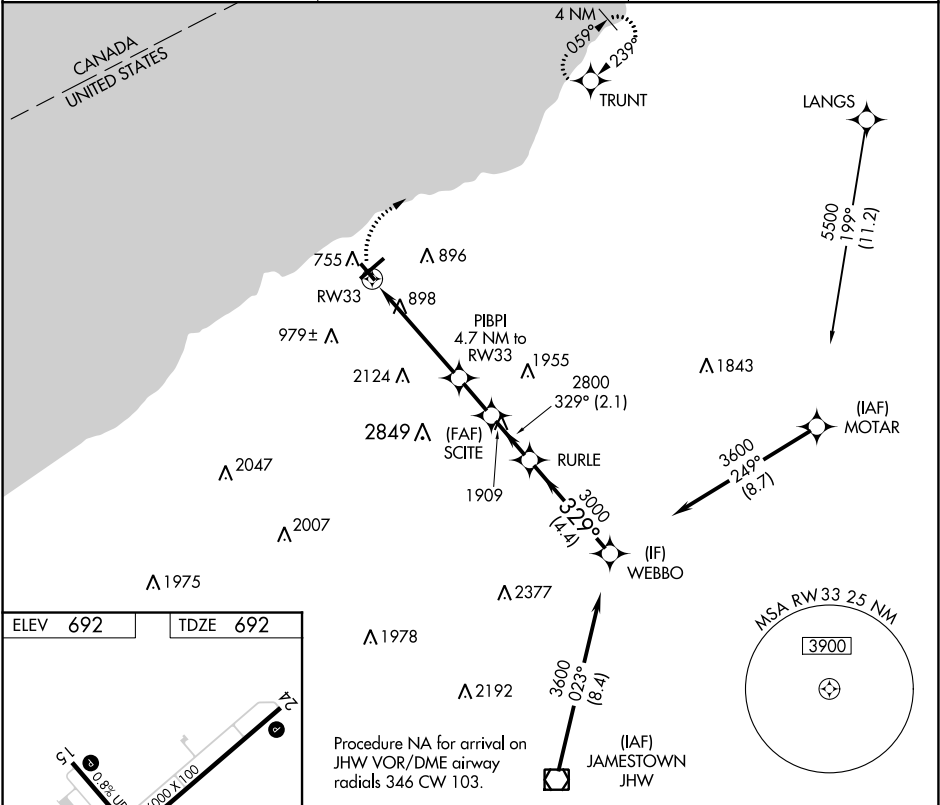


APP CRS	Rwy Idg	4000
329°	TDZE	692
	Apt Elev	692

RNAV (GPS) RWY 33  
CHAUTAUQUA COUNTY/DUNKIRK (DKK)

RNP APCH.	<p><b>T</b> Circling Cat D NA southeast of Rwy 6 and southwest of Rwy 33. <b>A</b> Rwy 33 helicopter visibility reduction below 1 SM NA. <b>S</b> Straight-In Rwy 33 NA at night, Circling Rwy 6, 24, 33 NA at night.</p>	MISSED APPROACH: Climbing right turn to 3200 direct TRUNT and hold.
-----------	-----------------------------------------------------------------------------------------------------------------------------------------------------------------------------------------------------------------------------------	---------------------------------------------------------------------

ASOS 119.275	BUFFALO APP CON 126.5 317.6	UNICOM 123.075 (CTAF) <b>0</b>
-----------------	--------------------------------	-----------------------------------



3200	TRUNT	Visual Segment - Obstacles.	WEBBO
		SCITE	
		RURLE	
		329°	3600
		3000	
		2800	
		2240	
		4.7 NM	1.8 NM
		2.1 NM	4.4 NM
CATEGORY	A	B	C
LNAB MDA	1860-1¼ 1168 (1200-1¼)	1860-1½ 1168 (1200-1½)	1860-3 1168 (1200-3)
CIRCLING	1860-1¼ 1168 (1200-1¼)	1860-1½ 1168 (1200-1½)	1860-3 1168 (1200-3)

NE-2, 31 DEC 2020 to 28 JAN 2021

NE-2, 31 DEC 2020 to 28 JAN 2021