



APP CRS <b>059°</b>	Rwy Idg TDZE Apt Elev	<b>N/A</b> <b>N/A</b> <b>692</b>
------------------------	-----------------------------	--

RNAV (GPS)-B  
CHAUTAUQUA COUNTY/DUNKIRK (DKK)

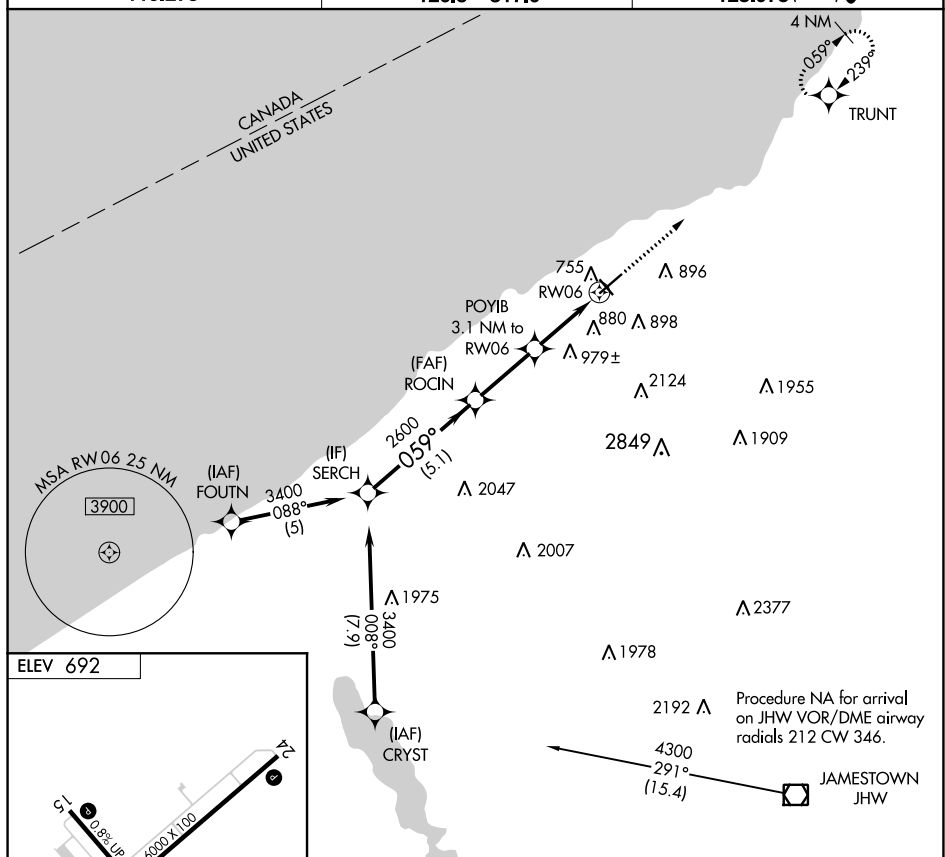
RNP APCH.

 Circling to Rwy 6, 24, 33 NA at night.  
 Circling Cat D NA southeast of Rwy 6 and southwest of Rwy 33.  
 -20°C

**MISSED APPROACH:** Climb to 3200 direct TRUNT and hold.

ASOS  
**119,275**

BUFFALO APP CON  
126.5 317.6

UNICOM  
123.075 (CTAF) **L**

MIRL Rwy 15-33 **L**  
REIL Rwy 6 and 24 **L**  
HIRL Rwy 6-24 **L**

DUNKIRK, NEW YORK  
Orig-A 10OCT19

CHAUTAUQUA COUNTY/DUNKIRK (DKK)

42°30'N-79°16'W

RNAV (GPS)-B

NE-2, 31 DEC 2020 to 28 JAN 2021

NE-2, 31 DEC 2020 to 28 JAN 2021

Visual Segment - Obstacles.

CATEGORY	A	B	C	D
<b>C</b> CIRCLING	1200-1 508 (600-1)	1320-1 628 (700-1)	1640-2 <sup>3</sup> / <sub>4</sub> 948 (1000-2 <sup>3</sup> / <sub>4</sub> )	2140-3 1448 (1500-3)