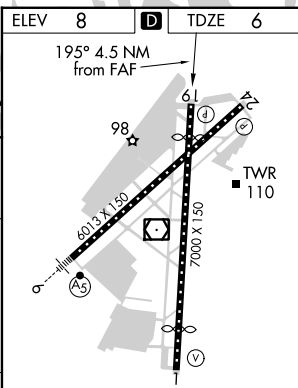
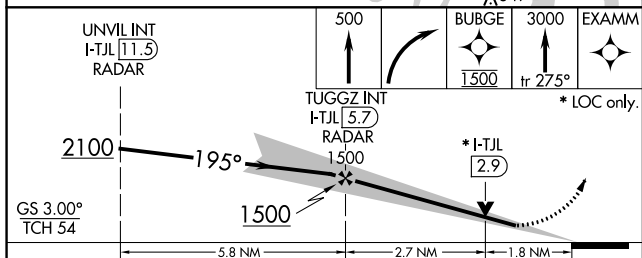
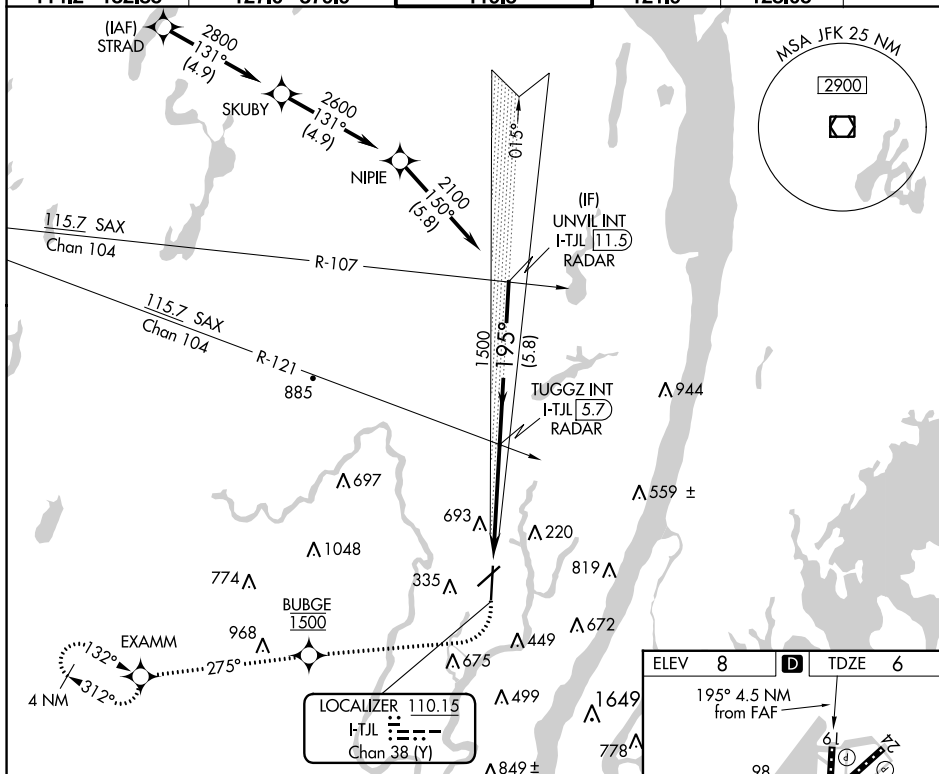


ILS or LOC RWY 19  
TETERBORO (TEB)

**MISSED APPROACH:** Climb to 500 then climbing right turn direct BUBGE, cross BUBGE at 1500, then climb to 3000 on track 275° to EXAMM and hold, continue climb-in-hold to 3000

D-ATIS	NEW YORK APP CON	TETERBORO TOWER	GND CON	CLNC DEL	CPDLC
114.2 132.85	127.6 379.9	119.5	121.9	128.05	



CATEGORY	A	B	C	D	TDZ/CL Rwy's 6 and 19 REIL Rwy's 1, 6, 19 and 24 HIRL Rwy's 1-19 and 6-24  FAF to MAP 4.5 NM			
S-ILS 19	219-3 $\frac{3}{4}$		213 (300-3 $\frac{3}{4}$ )					
S-LOC 19	640-1 634 (700-1)		640-1 $\frac{3}{4}$ 634 (700-1 $\frac{3}{4}$ )					
<b>C</b> CIRCLING	760-1 752 (800-1)		820-2 $\frac{1}{2}$ 1040-3 812 (900-2 $\frac{1}{2}$ ) 1032 (1100-3)					
			Knots	60	90	120	150	180
			Min:Sec	4:30	3:00	2:15	1:48	1:30

NE-2, 31 DEC 2020 to 28 JAN 2021

NE-2, 31 DEC 2020 to 28 JAN 2021