

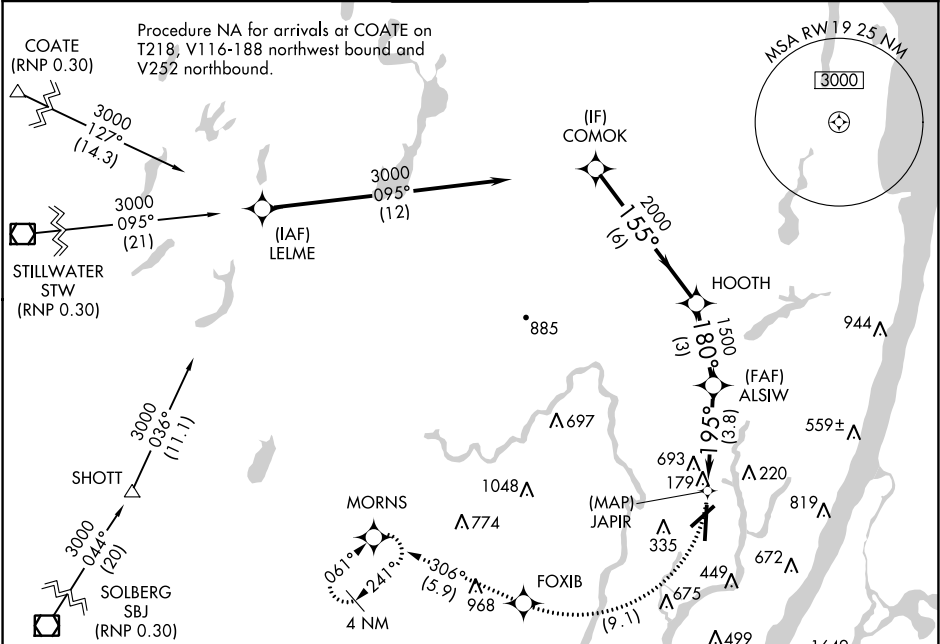
APP CRS	Rwy Idg	6230
195°	TDZE	6
	Apt Elev	8

RNAV (RNP) Z RWY 19

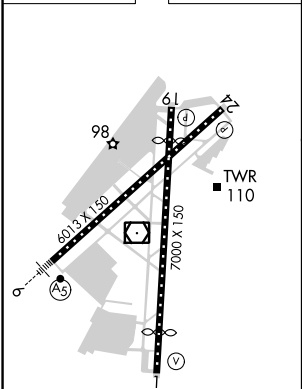
TETERBORO (TEB)

<p>NA</p> <p>For uncompensated Baro-VNAV systems, procedure NA below -13°C (8°F) or above 54°C (130°F). RF required. GPS required. Missed approach requires RNP less than 1.0.</p>	<p>MISSED APPROACH: Climb to 1500 via right turn to FOXIB, then climb to 3000 on track 306° to MORNNS and hold.</p>
---	---

D-ATIS	NEW YORK APP CON	TETERBORO TOWER	GND CON	CLNC DEL	CPDLC
114.2 132.85	127.6 379.9	119.5	121.9	128.05	



ELEV	8	TDZE	6
------	---	------	---



TDZ/CL Rwy 6 and 19
REIL Rwy 1, 6, 19 and 24
HIRL Rwy 1-19 and 6-24

Procedure NA for arrivals on SBJ VOR/DME airway radials 028 CW 117.					
---	--	--	--	--	--

NE-2, 31 DEC 2020 to 28 JAN 2021

NE-2, 31 DEC 2020 to 28 JAN 2021