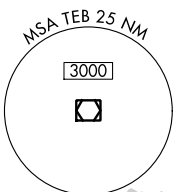
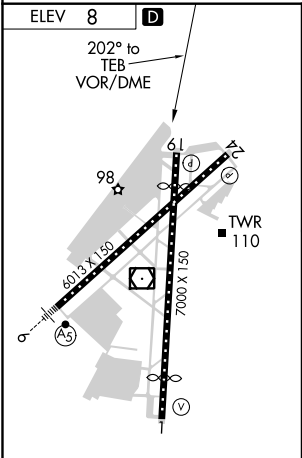
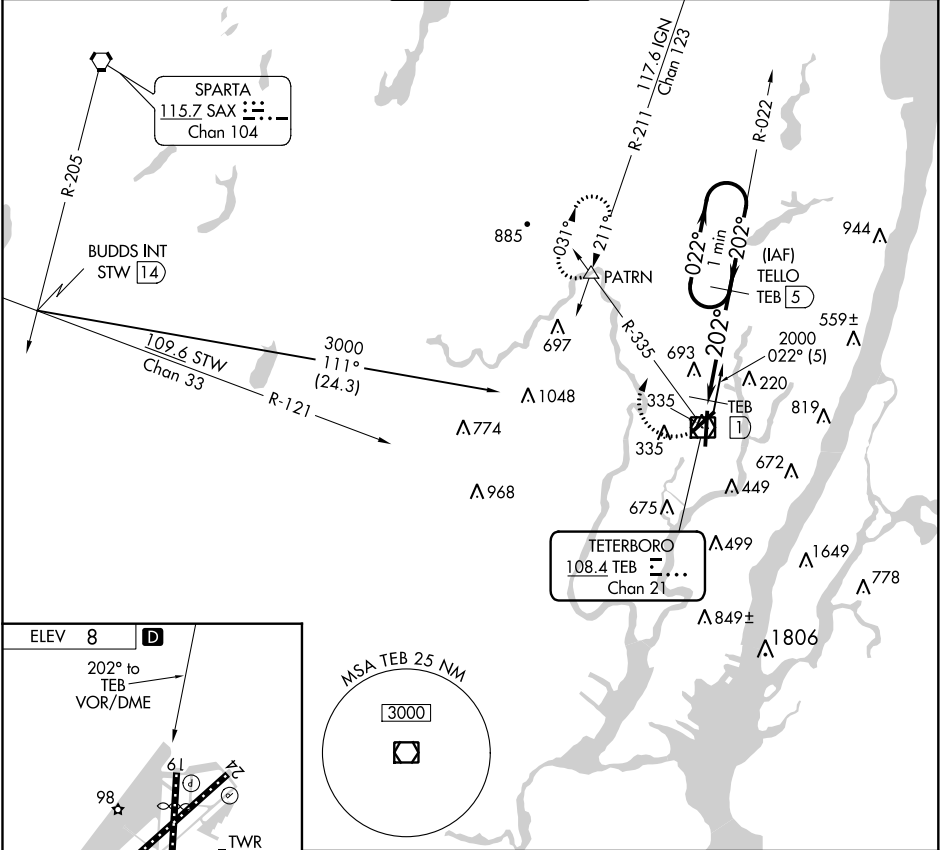




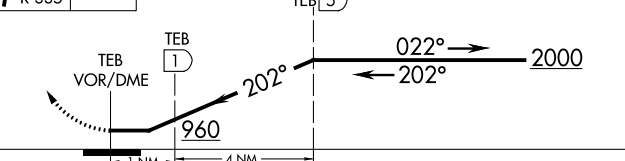

VOR/DME TEB <b>108.4</b> Chan 21	APP CRS <b>202°</b>	Rwy Idg TDZE Apt Elev	<b>N/A</b> <b>N/A</b> <b>8</b>
--	------------------------	-----------------------------	--------------------------------------

VOR/DME-B  
TETERBORO (TEB)

<b>⚠</b> Circling NA for Cats B, C and D NW of Rwy 6 and 19. When Circling to Rwy 24 at night, operational VGSI required, remain on or above VGSI glidepath until threshold.	<b>MISSED APPROACH:</b> Climbing right turn to 2500 on TEB R-335 to PATRN INT and hold.
--	--

D-ATIS <b>114.2 132.85</b>	NEW YORK APP CON <b>127.6 379.9</b>	TETERBORO TOWER <b>119.5</b>	GND CON <b>121.9</b>	CLNC DEL <b>128.05</b>	CPDLC
-------------------------------	--	---------------------------------	-------------------------	---------------------------	-------



2500		PATRN		One Minute Holding Pattern	
					
					
CATEGORY	A	B	C	D	
 CIRCLING	800-1 792 (800-1)	800-1¼ 792 (800-1¼)	820-2½ 812 (900-2½)	1040-3 1032 (1100-3)	

TDZ/CL Rwy 6 and 19  
HIRL Rwy 1-19 and 6-24  
REIL Rwy 1, 6, 19 and 24

NE-2, 31 DEC 2020 to 28 JAN 2021

NE-2, 31 DEC 2020 to 28 JAN 2021