

LOC I-MV 110.9	APP CRS 100°	Rwy Idg TDZE Apt Elev	6003 74 85
--------------------------	------------------------	-----------------------------	---------------------------------------

ILS or LOC RWY 10

MILLVILLE MUNI (MIV)

⚠

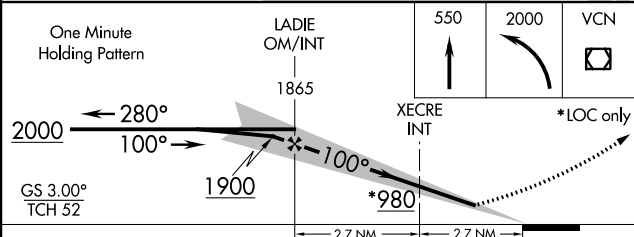
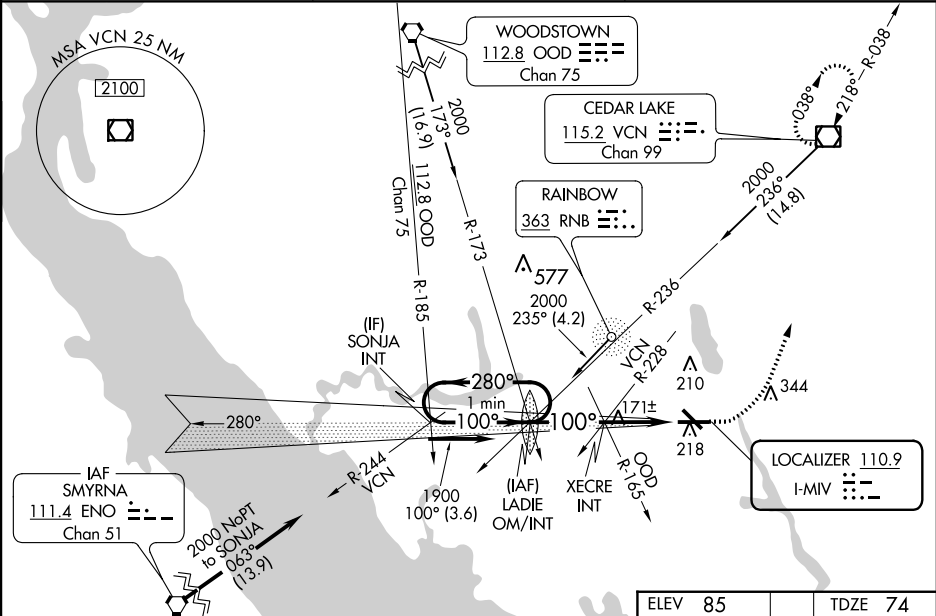
⚠

Circle to Rwy 32 NA at night. Inoperative table does not apply. Rwy 10 helicopter visibility reduction below ¼ SM NA. When local altimeter setting not received, use Atlantic City altimeter setting and increase all DA/MDA 60 feet; increase S-LOC 10 Cat B and Circling Cat B visibility ¼ mile, S-LOC 10 Cats C/D and Circling Cats C/D visibility ½ mile; XECRE fix minimums: increase S-LOC 10 Cats C/D visibility ¼ mile.

MALSR

MISSED APPROACH: Climb to 550 then climbing left turn to 2000 direct VCN VOR/DME and hold.

ASOS 119.6	ATLANTIC CITY APP CON 124.6 327.125	UNICOM 123.0 (CTAF)
----------------------	---	-------------------------------



ELEV 85	TDZE 74
MIRL Rwy 10-28 and 14-32	
FAF to MAP 5.4 NM	
Knots	60 90 120 150 180
Min:Sec	5:24 3:36 2:42 2:10 1:48

CATEGORY	A	B	C	D
S-ILS 10	347-1		273 (300-1)	
S-LOC 10	980-1¼	906 (900-1¼)	980-2½	906 (900-2½)
CIRCLING	980-1¼	895 (900-1¼)	980-2¾ 895 (900-2¾)	980-3 895 (900-3)
XECRE FIX MINIMUMS (DUAL VOR RECEIVERS REQUIRED)				
S-LOC 10	440-1		366 (400-1)	
CIRCLING	520-1 435 (500-1)	540-1 455 (500-1)	540-1½ 455 (500-1½)	640-2 555 (600-2)