

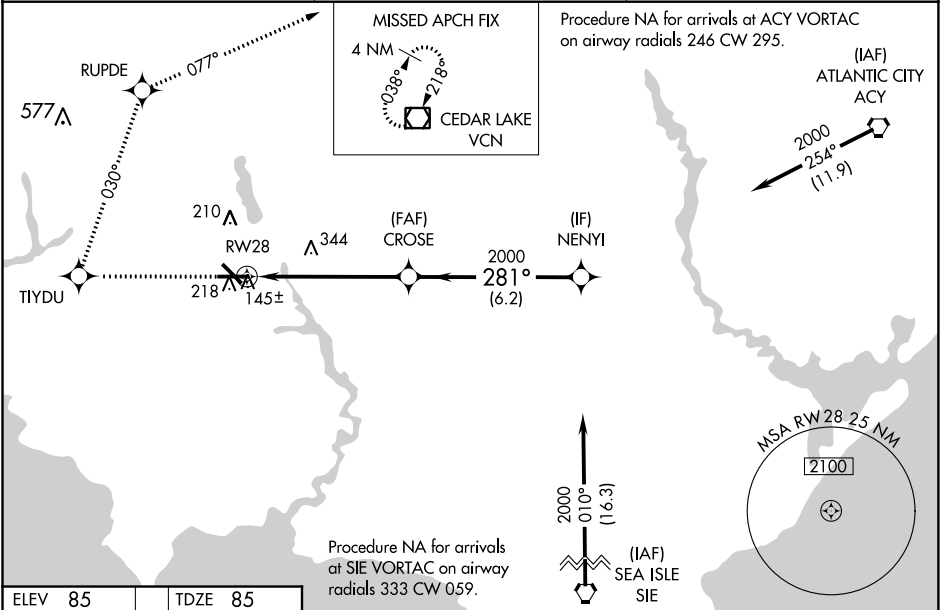
WAAS CH 42700 W28A	APP CRS 281°	Rwy Idg TDZE Apt Elev	6003 85 85
--	------------------------	-----------------------------	---------------------------------------

RNAV (GPS) RWY 28
MILLVILLE MUNI (MIV)

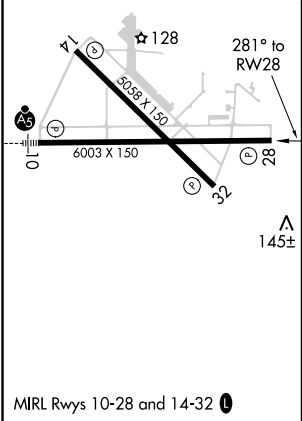
⚠ Circling Rwy 32 NA at night. DME/DME RNP-0.3 NA. For uncompensated Baro-VNAV systems, LNAV/VNAV NA below -15°C (5°F) or above 49°C (120°F). When local altimeter setting not received, use Atlantic City altimeter setting and increase all DA/MDA 60 feet; increase LNAV/VNAV all Cats, LNAV Cats C/D and Circling Cat C visibility ¼ mile. VDP and Baro-VNAV NA when using Atlantic City altimeter setting.

MISSED APPROACH: Climb to 2000 direct TIYDU and right turn on track 030° to RUPDE and right turn 077° track to VCN VOR/DME and hold.

ASOS 119.6	ATLANTIC CITY APP CON 124.6 327.125	UNICOM 123.0 (CTAF) 0
----------------------	---	---------------------------------



ELEV 85	TDZE 85
---------	---------



2000 ↑	TIYDU ✱	 tr 030°	RUPDE ✱	 tr 077°	VCN 	VGSI and RNAV glidepath not coincident (VGSI Angle 3.00/ TCH 29)
*LNAV only						
CATEGORY	A		B		C	D
LPV DA			344-1 259 (300-1)			
LNAV/ VNAV DA			405-1 320 (400-1)			
LNAV MDA	640-1 555 (600-1)		640-1½ 555 (600-1½)		640-1¾ 555 (600-1¾)	
CIRCLING	640-1 555 (600-1)		640-1½ 555 (600-1½)		640-2 555 (600-2)	

NE-2, 31 DEC 2020 to 28 JAN 2021

NE-2, 31 DEC 2020 to 28 JAN 2021