

WAAS
CH **70303**
W05A

APP CRS
045°

Rwy Idg **5601**
TDZE **205**
Apt Elev **221**

RNAV (GPS) RWY 5

MASSENA INTL-RICHARDS FIELD (MSS)

RNP APCH.

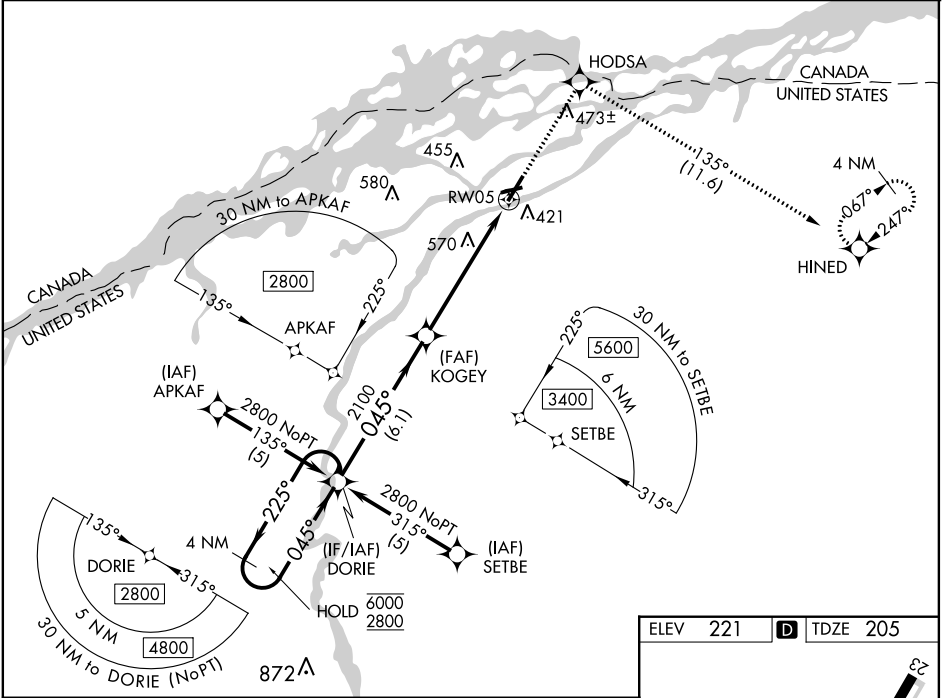
▼

▲

Circling Rwy 9, 23, 27 NA at night.
For uncompensated Baro-VNAV systems,
LNAV/VNAV NA below -15°C or above 54°C.

MISSED APPROACH: Climb to 3000 direct
HODSA and on track 135° to HINED and hold.

ASOS 128.075	BOSTON CENTER 135.25 377.1	UNICOM 123.0 (CTAF) 0
------------------------	--------------------------------------	---------------------------------



VGSI and RNAV glidepath not coincident
(VGSI Angle 3.00/TCH 58).

4 NM Holding Pattern

DORIE

6000 ← 225°
2800 → 045°

GP 3.00°
TCH 54

6.1 NM

3.8 NM

1.9 NM

3000

HODSA

tr 135°

HINED

*LNAV only

*1.9 NM to RW05

RW05

CATEGORY	A	B	C	D
LPV DA		455-3 ³ / ₄	250 (300-3 ³ / ₄)	
LNAV/VNAV DA		968-2 ³ / ₄	763 (800-2 ³ / ₄)	
LNAV MDA	860-1	655 (700-1)	860-1 ⁷ / ₈ 655 (700-1 ⁷ / ₈)	860-2 655 (700-2)
CIRCLING	860-1	639 (700-1)	860-1 ⁷ / ₈ 639 (700-1 ⁷ / ₈)	900-2 ¹ / ₄ 679 (700-2 ¹ / ₄)

