

WAAS CH <b>97720</b> <b>W05A</b>	APP CRS <b>049°</b>	Rwy Idg TDZE <b>184</b> Apt Elev <b>187</b>	<b>5998</b>
--	------------------------	---	-------------

RNAV (GPS) RWY 5

MORRISTOWN MUNI (MMU)

RNP APCH.

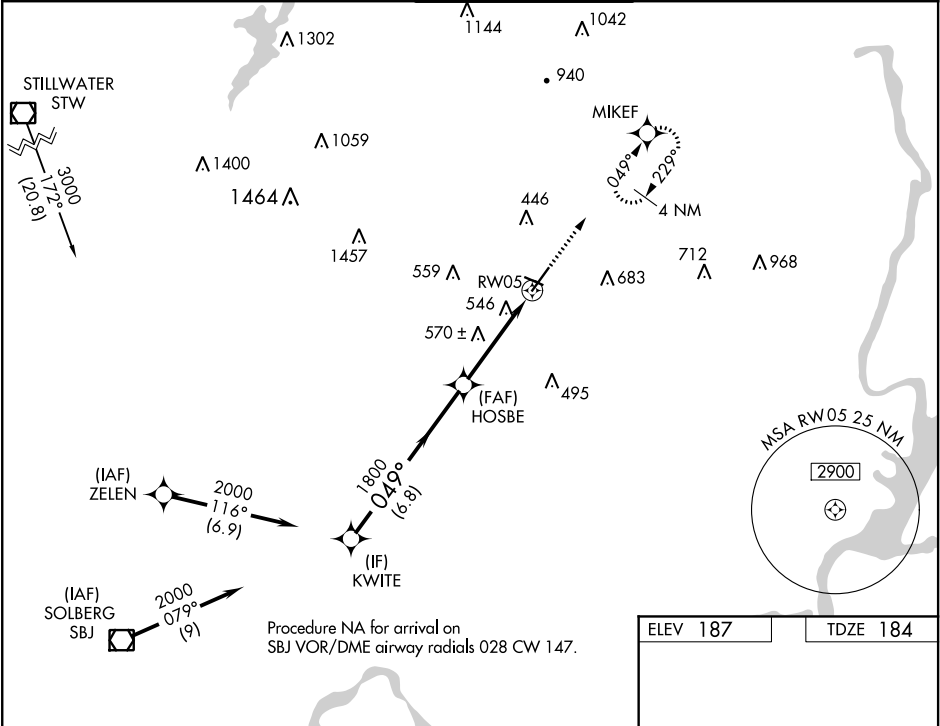
▼

▲

Rwy 5 helicopter visibility reduction below  $\frac{3}{4}$  SM NA.  
For uncompensated Baro-VNAV systems, procedure NA below -15°C or above 46°C.  
Circling Rwy 13, 31 NA at night.

MISSED APPROACH: Climb to 2500 direct MIKEF and hold, continue climb-in-hold to 2500.

ATIS <b>124.25</b>	NEW YORK APP CON <b>127.6 379.9</b>	MORRISTOWN TOWER* <b>118.10 (CTAF) 353.9</b>	GND CON <b>134.2</b>	CLNC DEL <b>128.6</b>
-----------------------	--	---	-------------------------	--------------------------



ELEV 187	TDZE 184
----------	----------

KWITE		HOSBE		RW05	
2000		1800		2500	
GP 3.50°		049°		MIKEF	
TCH 59		1800		*1.7 NM to RW05	
6.8 NM		2.5 NM		*LNAV only.	
1.7 NM		1.7 NM		RW05	
CATEGORY	A	B	C	D	
LPV DA	879-2		695 (700-2)		
LNAV/VNAV DA	893-2		709 (800-2)		
LNAV MDA	880-1	696 (700-1)	880-2	696 (700-2)	
CIRCLING	880-1 693 (700-1)	900-1 713 (800-1)	1000-2½ 813 (900-2½)	1200-3 1013 (1100-3)	

