
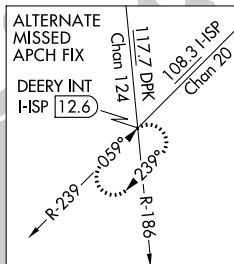




ILS or LOC RWY 6
LONG ISLAND MAC ARTHUR (TSP)

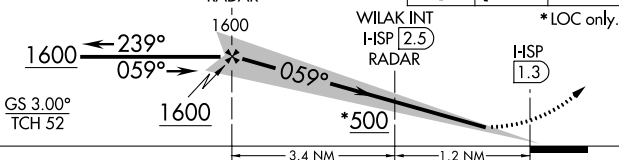
MALSR

MISSED APPROACH:
Climb to 600 then
climbing right turn to
2000 direct CCC
VOR/DME and hold.

CALVERTON
117.2 CCC 
Chan 119



600	2000	CCC
		



059° 4.6 NM from FAF

MIRA Rwy 15R-33L

HIRA Rwy 6-24

FAF to MAP 4.6 NM					
Knots	60	90	120	150	180
Min:Sec	4:36	3:04	2:18	1:50	1:32

NE-2, 31 DEC 2020 to 28 JAN 2021

NE-2, 31 DEC 2020 to 28 JAN 2021