

RNAV (GPS) RWY 6

LONG ISLAND MAC ARTHUR (ISP)

MISSED APPROACH:
Climb to 600 then
climbing right turn to
2000 direct CCC VOR/
DME and hold.

Diagram illustrating a flight path (likely a procedure) over a coastal area, showing various waypoints, altitudes, and distances.

Key Waypoints and Altitudes:

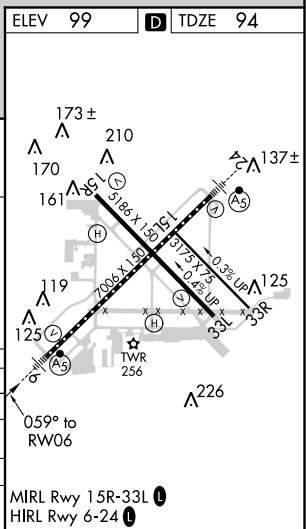
- DEERY (IF/IAF): 1600, 059° (6.7)
- YOSUR (FAF): 530
- RW06: 225
- 583, 263, 272, 530, 225

Distances and Angles:

- DEERY to YOSUR: 4 NM, 239°
- YOSUR to RW06: 4 NM, 059°
- RW06 to DEERY: 4 NM, 266°
- DEERY to DEERY: 4 NM, 248° (27.6)
- DEERY to DEERY: 4 NM, 086°

Other Information:

- MSA RW06 25 NM (1900)
- ELEV 99, D, TDZE 94



NE-2, 31 DEC 2020 to 28 JAN 2021