

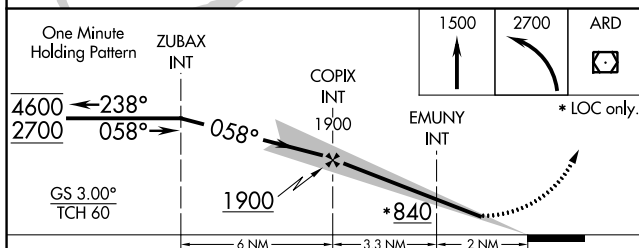
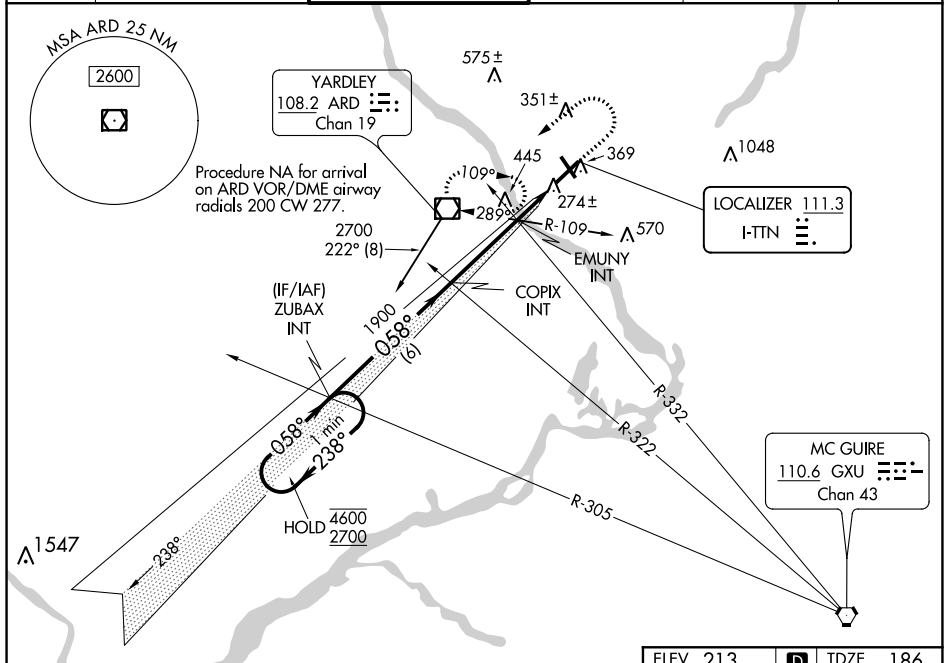
ILS or LOC RWY 6



- T** When Circling to Rwy 34 at night, operational VGSI required, remain on or above VGSI glidepath until threshold. For inop ALS, increase **A** EMUNY fix minimums S-LOC 6 Cat C/D visibility to 1 SM.

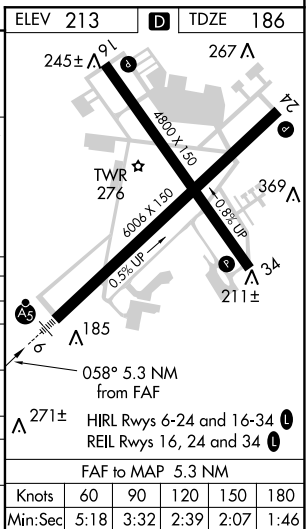


MISSED APPROACH: Climb to 1500 then climbing left turn to 2700 direct ARD VOR/DME and hold.

ATIS 126.775	PHILADELPHIA APP CON 123.8 291.7	TRENTON TOWER ★ 120.7 (CTAF) 0 257.8	GND CON 121.9 257.8	CLNC DEL 121.9 257.8	UNICOM 122.95
-----------------	-------------------------------------	---	------------------------	-------------------------	------------------



CATEGORY	A	B	C	D
S-ILS 6	414-½ 228 (300-½)			
S-LOC 6	840-½ 654 (700-½)		840- 1¾ 654 (700-1¾)	
 CIRCLING	840-1 627 (700-1)		760-1⅞ 547 (600-1⅞)	960-2½ 747 (800-2½)
EMUNY FIX MINIMUMS (DUAL VOR RECEIVERS REQUIRED)				
S-LOC 6	540-½ 354 (400-½)		540-⅝ 354 (400-⅝)	
 CIRCLING	680-1 467 (500-1)		680-1½ 467 (500-1½)	780-2 567 (600-2)



NE-2. 31 DEC 2020 to 28 JAN 2021