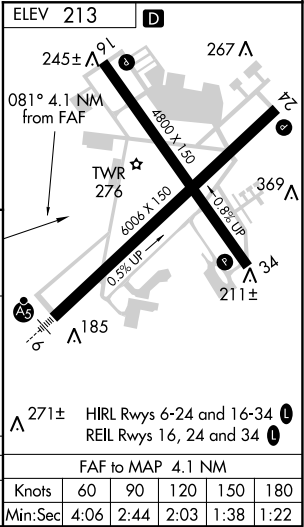
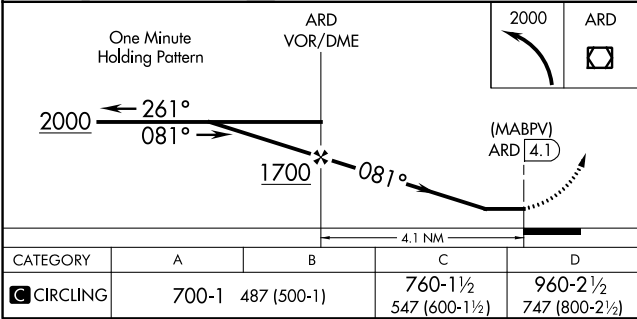
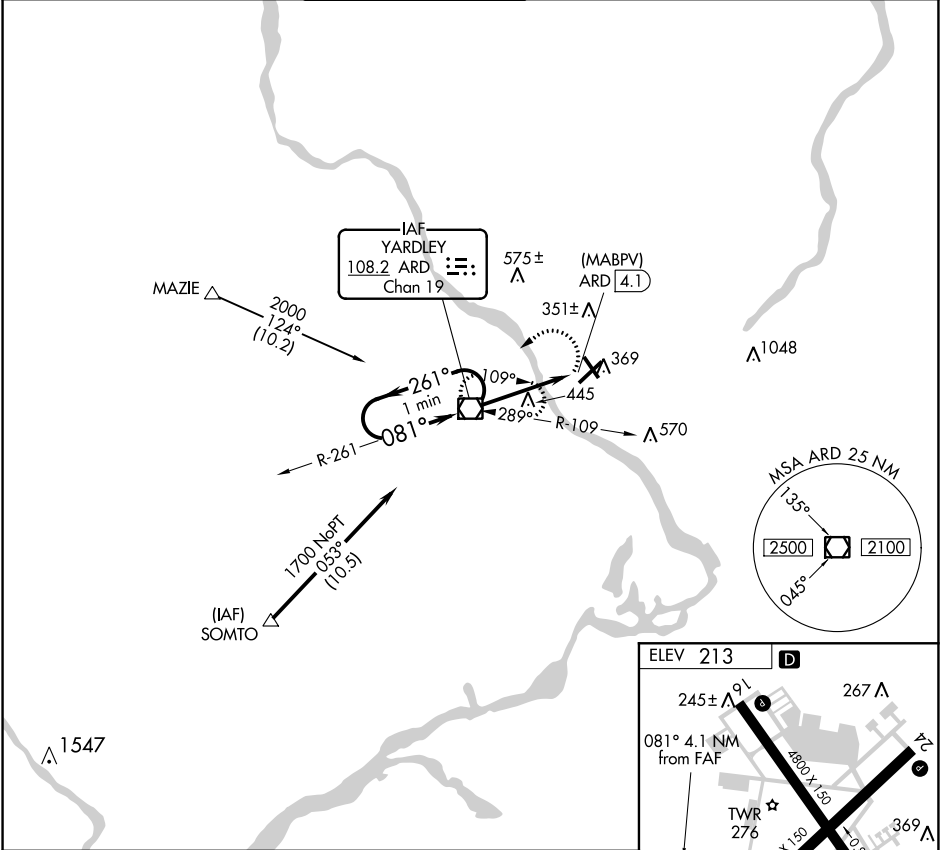


VOR/DME ARD <b>108.2</b> Chan <b>19</b>	APP CRS <b>081°</b>	Rwy Idg TDZE Apt Elev <b>N/A</b> <b>N/A</b> <b>213</b>	VOR or GPS-A TRENTON MERCER (TTN)			
<div><div><div>T</div><div>A</div></div><div>Night Landing: Rwy 34 operational VGSI required, remain on or above VGSI glidepath until threshold.</div></div>			<div>MISSED APPROACH: Climbing left turn to 2000 direct ARD VOR/DME and hold.</div>			
ATIS <b>126.775</b>	PHILADELPHIA <b>123.8</b>	APP CON <b>291.7</b>	TRENTON TOWER ★ <b>120.7</b> (CTAF) <b>0 257.8</b>	GND CON <b>121.9 257.8</b>	CLNC DEL <b>121.9 257.8</b>	UNICOM <b>122.95</b>



NE-2, 31 DEC 2020 to 28 JAN 2021

NE-2, 31 DEC 2020 to 28 JAN 2021