

WAAS  
CH **81822**  
**W06A**

APP CRS  
**055°**

Rwy Idg  
TDZE  
Apt Elev  
**9002**  
**57**  
**66**

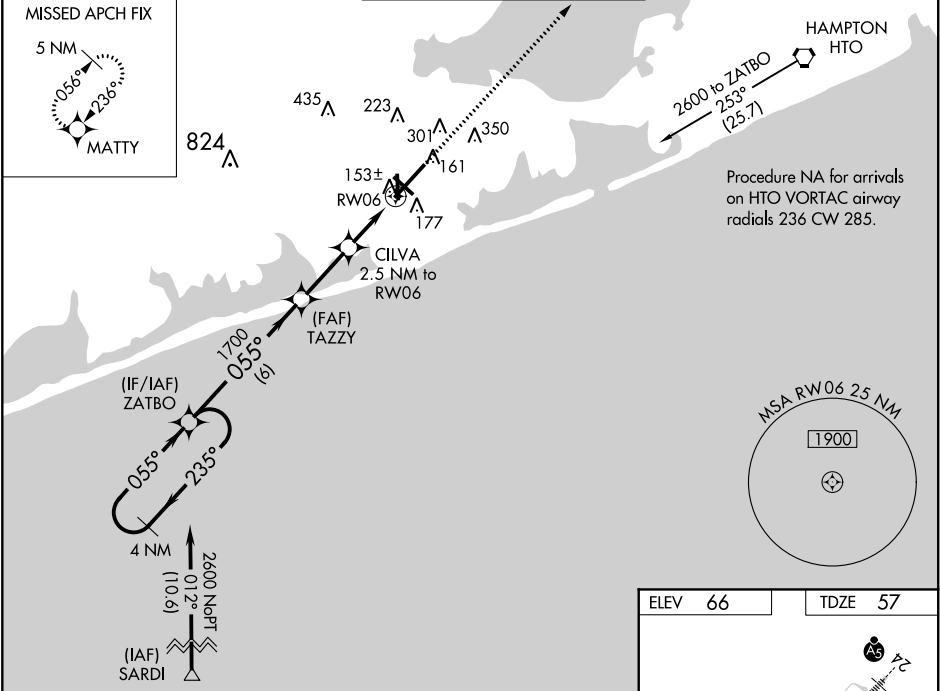
**RNAV (GPS) RWY 6**

FRANCIS S GABRESKI (F'OK)

⚠ Helicopter visibility reduction below ¾ SM not authorized. For uncompensated Baro-VNAV systems, LNAV/VNAV NA below -15°C (5°F) or above 43°C (109°F). DME/DME RNP-0.3 NA. When local altimeter setting not received, use Shirley altimeter setting: increase LPV DA to 325 and all Cats visibility ½ mile; increase LNAV/VNAV DA to 361 and all Cats visibility ½ mile; increase all MDA 40 feet and LNAV cats C/D visibility ½ mile and Circling Cat D visibility ¼ mile. Baro-VNAV and VDP NA when using Shirley altimeter setting. Circling Rwy 15 NA at night.

MISSED APPROACH:  
Climb to 2000 direct MATTY and hold.

ASOS <b>119.925</b>	NEW YORK APP CON <b>125.975 343.65</b>	SUFFOLK COUNTY TOWER ★ <b>125.3 (CTAF) 236.6</b>	GND CON <b>121.8 225.4</b>	UNICOM <b>122.95</b>
------------------------	---	---	-------------------------------	-------------------------



4 NM Holding Pattern ZATBO

GP 3.00° TCH 55

2600 ← 235° 055° →

1700

TAZZY

CILVA 2.5 NM to RW06

\*1 NM to RW06

RW06

6.0 NM 2.5 NM 1.5 1 NM

2000 MATTY

\*LNAV only

VGSI and RNAV glidepath not coincident (VGSI Angle 3.00/TCH 66).

CATEGORY	A	B	C	D
LPV DA		307-¾	250 (300-¾)	
LNAV/VNAV DA		343-⅞	286 (300-⅞)	
LNAV MDA		420-1	363 (400-1)	
CIRCLING	600-1 534 (600-1)	620-1 554 (600-1)	620-1½ 554 (600-1½)	700-2 634 (700-2)

ELEV 66 TDZE 57

055° to RW06

HIRL Rwy 6-24 1  
MIRL Rwy 15-33 1  
REIL Rws 6, 15, and 33 1