

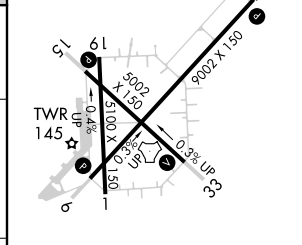
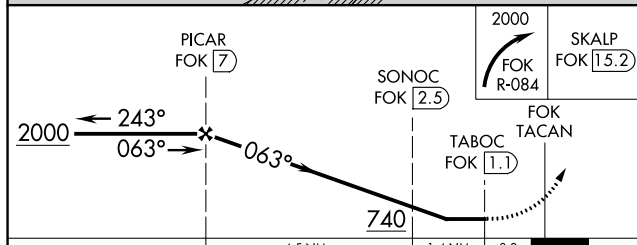
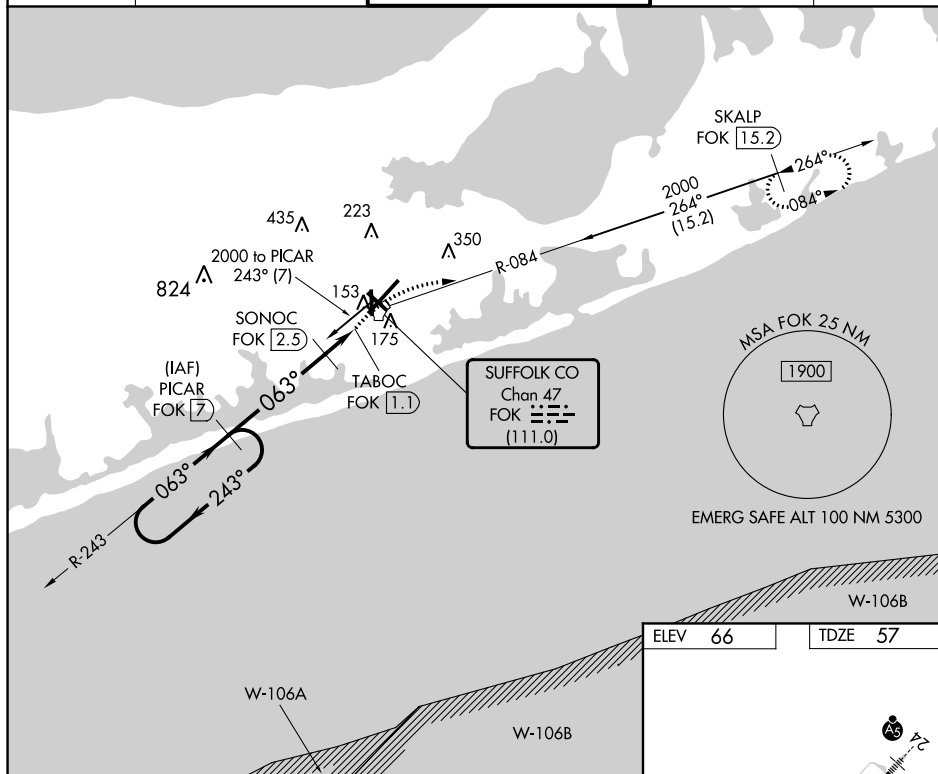
TACAN FOK Chan 47 (111.0)	APP CRS 063°	Rwy Idg TDZE Apt Elev	9002 57 66
--	------------------------	-----------------------------	---------------------------------------

TACAN RWY 6
FRANCIS S GABRESKI (FOK)

NA Helicopter visibility reduction below $\frac{3}{4}$ SM not authorized. When local altimeter setting not received, use Shirley altimeter setting and increase all MDA 40 feet and S-6 Cats C/D visibility to $1\frac{1}{8}$ miles and Circling Cat D visibility to $2\frac{1}{4}$ miles. Circling Rwy 15 NA at night.

MISSED APPROACH: Climbing right turn to 2000 on FOK TACAN R-084 to SKALP/15.2 DME and hold.

ASOS 119.925	NEW YORK APP CON 125.975 343.65	SUFFOLK COUNTY TOWER ★ 125.3 (CTAF) 0 236.6	GND CON 121.8 225.4	UNICOM 122.95
------------------------	---	---	-------------------------------	-------------------------



CATEGORY	A	B	C	D
S-6	420-1 363 (400-1)			
CIRCLING	600-1 534 (600-1)	620-1 554 (600-1)	620-1½ 554 (600-1½)	700-2 634 (700-2)

HIRL Rwy 6-24 **L**
MIRL Rwy 15-33 **L**
REIL Rwy 6, 15, and 33 **L**