

WAAS CH <b>49037</b> <b>W28A</b>	APP CRS <b>282°</b>	Rwy Idg <b>4255</b> TDZE <b>46</b> Apt Elev <b>55</b>
--	------------------------	---

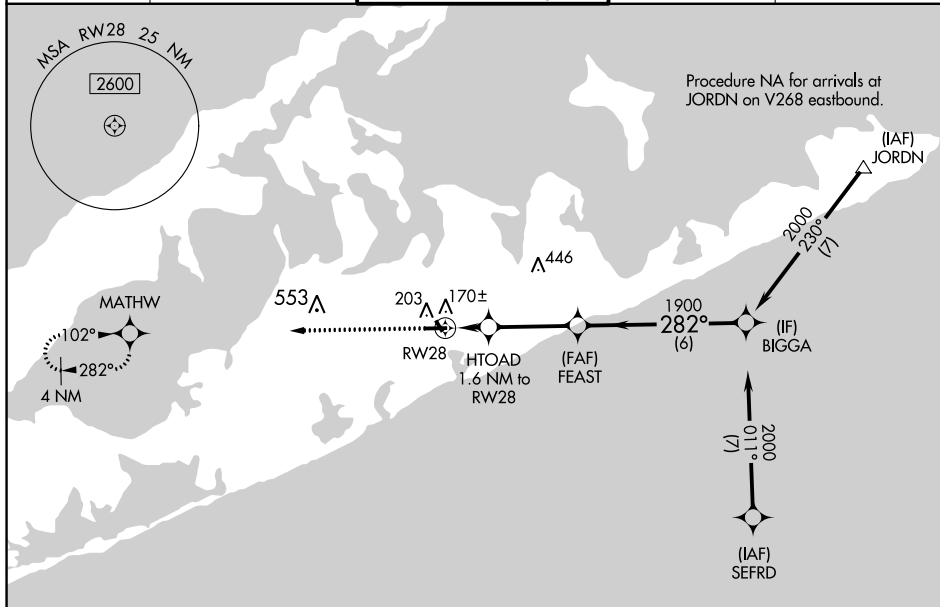
RNAV (GPS) Z RWY 28  
EAST HAMPTON (HTO)

RNP APCH.

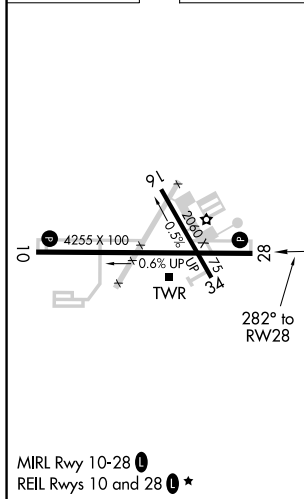
**T** Circling to Rwy 16, 34 NA at night. Rwy 28 helicopter visibility reduction below 1 SM NA. For uncompensated Baro-VNAV systems, LNAV/VNAV NA below -15°C or above 48°C. Straight-in and Circling Rwy 28 at night operational VGSi required, remain at or above VGSi glidepath until threshold. Circling Rwy 10 at night operational VGSi required, remain on or above VGSi glidepath until threshold.

**MISSED APPROACH:**  
Climb to 2000 direct  
MATHW and hold.

AWOS-3PT <b>118.075</b>	NEW YORK APP CON <b>125.975 343.65</b>	EAST HAMPTON TOWER ★ <b>125.225 (CTAF) 0</b>	GND CON <b>121.9</b>	CLNC DEL <b>118.95</b>
----------------------------	---	---	-------------------------	---------------------------



ELEV	55		TDZE	46
------	----	--	------	----



2000 ↑	MATHW ✱	VGSi and RNAV glidepath not coincident (VGSi Angle 3.00/TCH 54).		BIGGA
* LNAV only				
CATEGORY	A	B	C	D
LPV DA	346-1	300 (300-1)		NA
LNAV/ VNAV DA	356-1	310 (400-1)		NA
LNAV MDA	420-1	374 (400-1)		NA
<b>C</b> CIRCLING	600-1	545 (600-1)	640-1½ 585 (600-1½)	NA