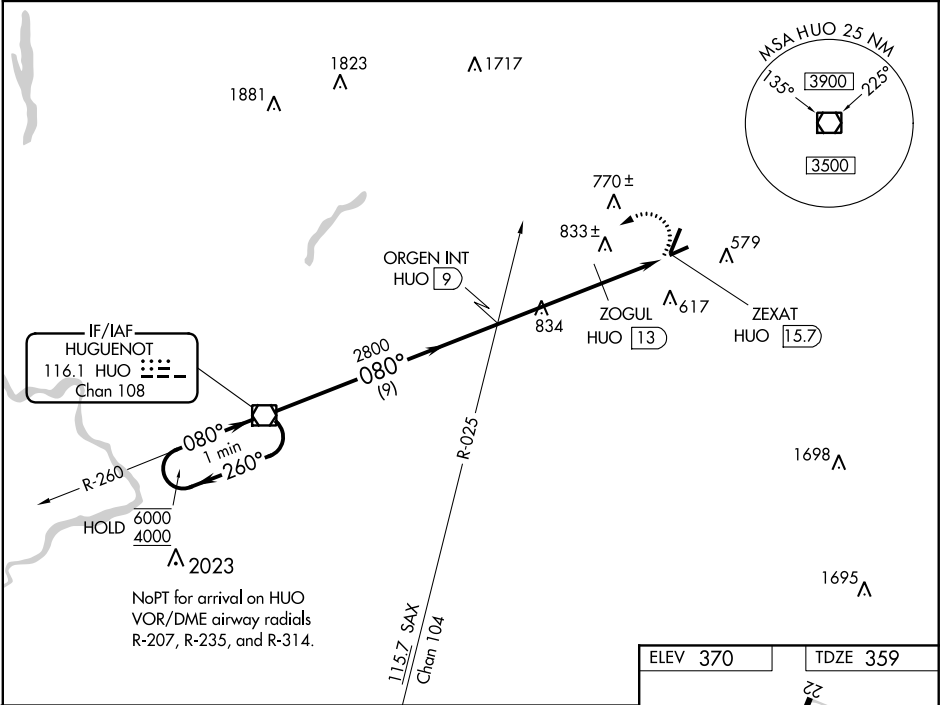


VOR/DME HUO	APP CRS	Rwy Idg	3664
116.1	080°	TDZE	359
Chan 108		Apt Elev	370

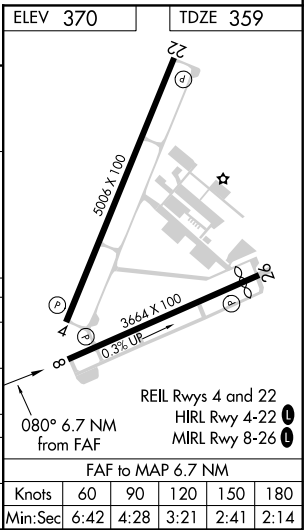
VOR RWY 8
ORANGE COUNTY (MGJ)

<p>▼ Rwy 8 helicopter visibility reduction below ¾ SM NA.</p> <p>▲ Straight-in Rwy 8 NA at night, Circling Rwy 8, 22, 26 NA at night.</p>	MISSED APPROACH: Climbing left turn to 4000 direct HUO VOR/DME and hold.
---	--

ASOS 119.275	NEW YORK APP CON 132.75 363.1	CLNC DEL 123.85	UNICOM 122.725 (CTAF) 0
-----------------	----------------------------------	--------------------	----------------------------



One Minute Holding Pattern				
HUO VOR/DME				
6000 ← 260° → 4000 080° →				
VGSI and descent angles not coincident (VGSI Angle 3.50/TCH 49).				
ORIGIN INT HUO (9) 2800				
ZOGUL HUO (13) 1220				
ZEXAT HUO (15.7)				
3.39° TCH 40 1220				
9 NM 4 NM 2.7 NM				
CATEGORY	A	B	C	D
S-8	1220-1 861 (900-1)	1220-1¼ 861 (900-1¼)	1220-2½ 861 (900-2½)	1220-2¾ 861 (900-2¾)
CIRCLING	1220-1¼	850 (900-1¼)	1220-2½ 850 (900-2½)	1220-2¾ 850 (900-2¾)
ZOGUL MINIMUMS				
S-8	1160-1 801 (800-1)	1160-1¼ 801 (800-1¼)	1160-2½ 801 (800-2½)	1160-2¾ 801 (800-2¾)
CIRCLING	1200-1¼	830 (900-1¼)	1200-2½ 830 (900-2½)	1200-2¾ 850 (900-2¾)



NE-2, 31 DEC 2020 to 28 JAN 2021

NE-2, 31 DEC 2020 to 28 JAN 2021