
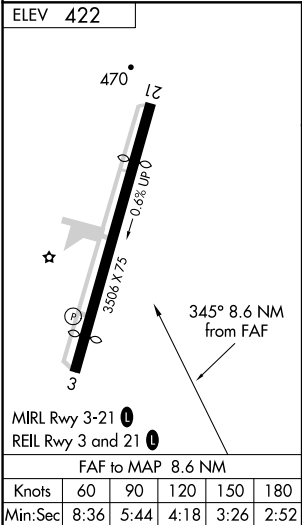
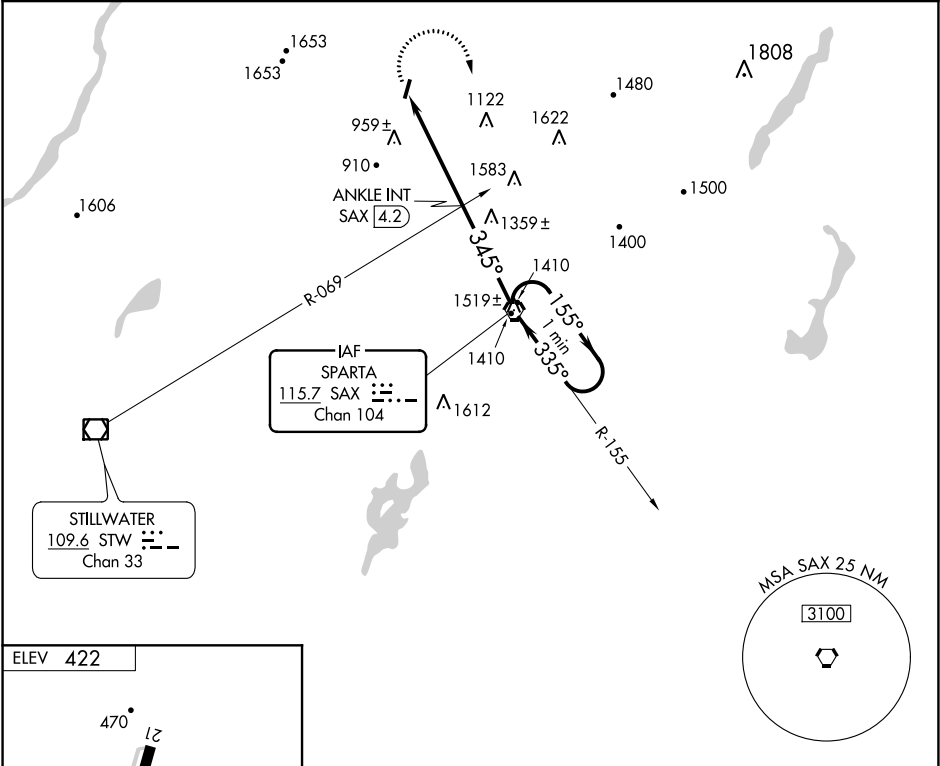


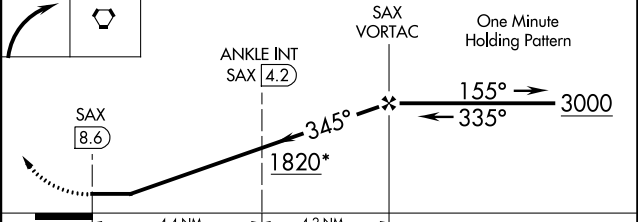


| | | | |
|---|------------------------|-----------------------------|--|
| VORTAC SAX 115.7 Chan 104 | APP CRS 345° | Rwy Idg TDZE Apt Elev | N/A N/A 422 |
|---|------------------------|-----------------------------|--|

VOR-A
SUSSEX (F'WN)

| | |
|---|--|
|  <p>When local altimeter setting not received, use Teterboro altimeter setting and increase all MDA 140 feet and ANKLE FIX Minimums Cats A & B visibility ¼ mile and Cat C ½ mile. Procedure NA at night. Helicopter visibility reduction below 1 SM NA.</p> | MISSED APPROACH: Climbing right turn to 3000 direct SAX VORTAC and hold. |
|---|--|

| | | |
|------------------------|--|-------------------------------|
| ASOS 118.525 | NEW YORK APP CON 127.6 379.9 | UNICOM 122.7 (CTAF) |
|------------------------|--|-------------------------------|



| | | | | |
|--|---------------------------|---|-------------------------|----------------------------|
| 3000 | SAX | *1960 when using Teterboro altimeter setting. | SAX VORTAC | One Minute Holding Pattern |
|  | | | | |
| CATEGORY | A | B | C | D |
|  CIRCLING | 1820-1¼ 1398 (1400-1¼) | 1820-1½ 1398 (1400-1½) | 1820-3 1398 (1400-3) | NA |
| ANKLE FIX MINIMUMS (DUAL VOR RECEIVERS OR DME REQUIRED) | | | | |
|  CIRCLING | 1300-1 878 (900-1) | 1300-1¼ 878 (900-1¼) | 1300-2½ 878 (900-2½) | NA |

NE-2, 31 DEC 2020 to 28 JAN 2021

NE-2, 31 DEC 2020 to 28 JAN 2021