

WAAS  
CH **72820**  
**W15A**

APP CRS  
**150°**

Rwy Idg  
TDZE **462**  
Apt Elev **475**

**RNAV (GPS) RWY 15**  
OSWEGO COUNTY (FZY)

RNP APCH.

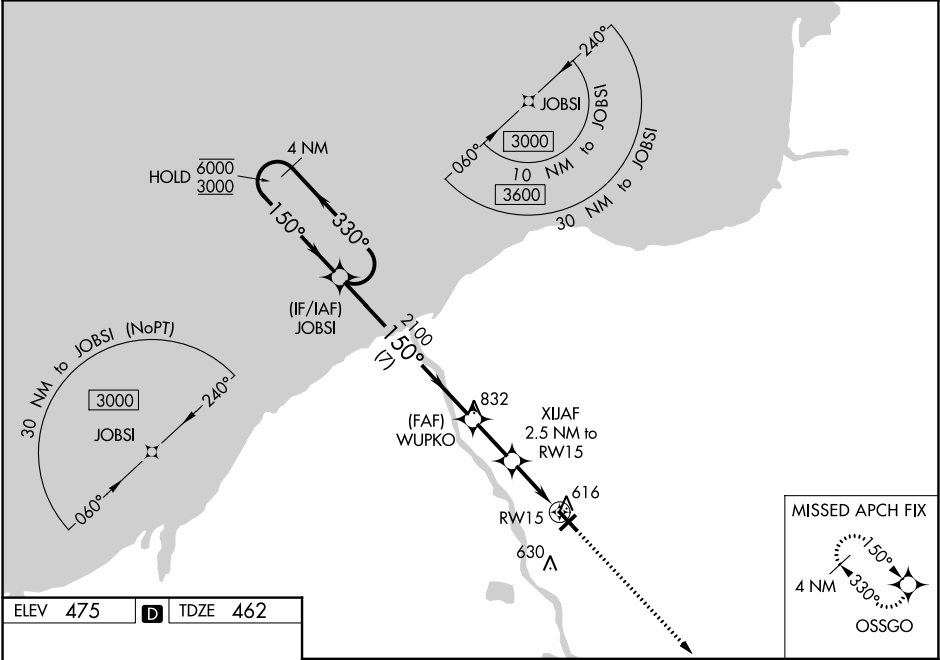
T

A

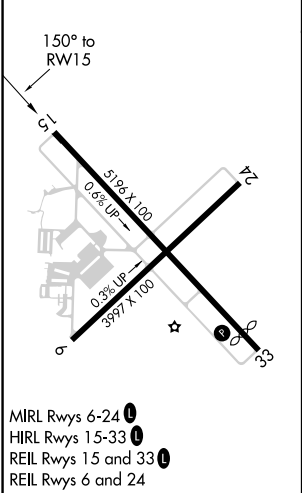
Rwy 15 helicopter visibility reduction below ¾ SM NA.  
For uncompensated Baro-VNAV systems, LNAV/VNAV  
NA below -24°C or above 54°C.

MISSED APPROACH:  
Climb to 3000 direct  
OSSGO and hold.

ASOS <b>119.275</b>	SYRACUSE APP CON <b>126.125 269.125</b>	UNICOM <b>123.0 (CTAF) 0</b>
------------------------	--	---------------------------------



ELEV <b>475</b>	<b>D</b>	TDZE <b>462</b>
-----------------	----------	-----------------



4 NM Holding Pattern		JOBSI	WUPKO	XIJAF	2.5 NM to RWY 15	1.2 NM to RWY 15	1.3 NM	1.2 NM	3000	OSSGO
6000 ← 330°		3000 → 150°	150°	2100	*1380					
GP 3.30°		TCH 60								
CATEGORY	A	B	C	D						
LPV DA	783-1		321 (400-1)			NA				
LNAV/VNAV DA	887-1¼		425 (500-1¼)			NA				
LNAV MDA	920-1	458 (500-1)	920-1⅜		458 (500-1⅜)	NA				
CIRCLING	1000-1	525 (600-1)	1000-1½		525 (600-1½)	NA				