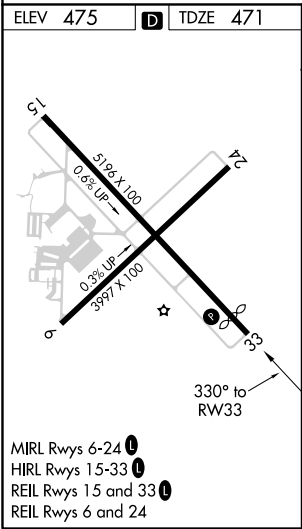
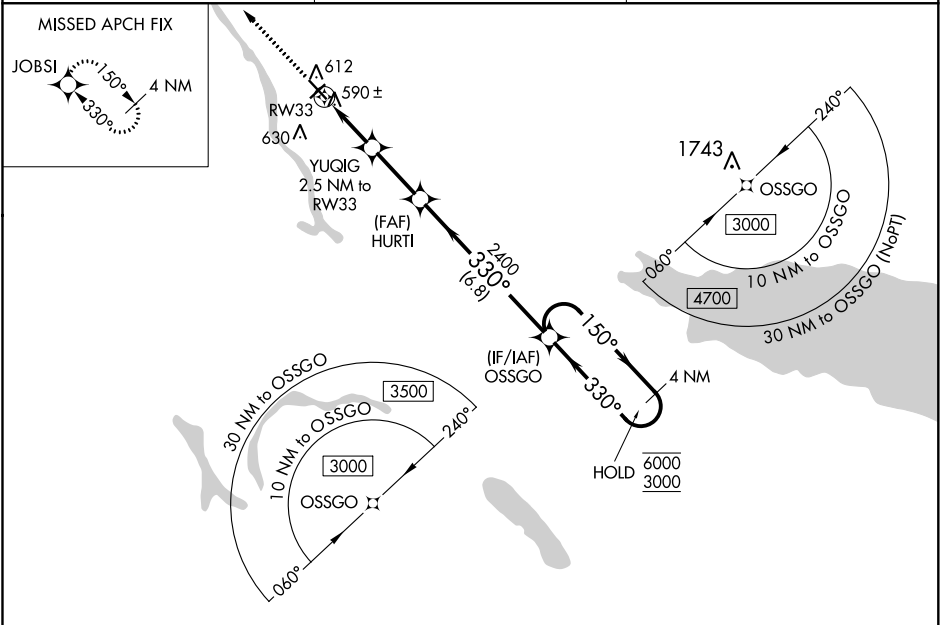


WAAS CH 82520 W33A	APP CRS 330°	Rwy Idg 4782 TDZE 471 Apt Elev 475
--	------------------------	---

RNAV (GPS) RWY 33
OSWEGO COUNTY (FZY)

RNP APCH.		MISSED APPROACH: Climb to 3000 direct JOBSI and hold.
Rwy 33 helicopter visibility reduction below 3/4 SM NA. For uncompensated Baro-VNAV systems, LNAV/VNAV NA below -22°C or above 54°C.		

ASOS 119.275	SYRACUSE APP CON 126.125 269.125	UNICOM 123.0 (CTAF)
------------------------	--	-------------------------------



3000 ↑ JOBSI		YUGIG 2.5 NM to RW33		HURTI 2400	OSSGO 4 NM Holding Pattern
* LNAV only		* 0.9 NM to RW33			

NE-2, 31 DEC 2020 to 28 JAN 2021

NE-2, 31 DEC 2020 to 28 JAN 2021