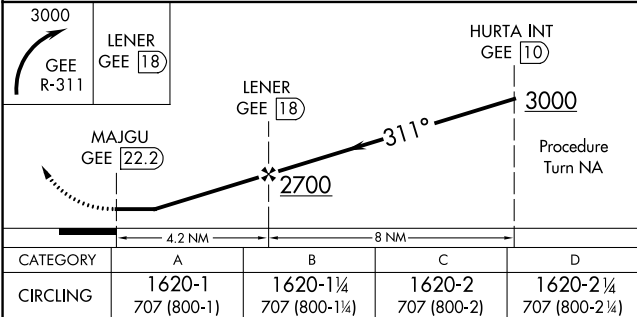
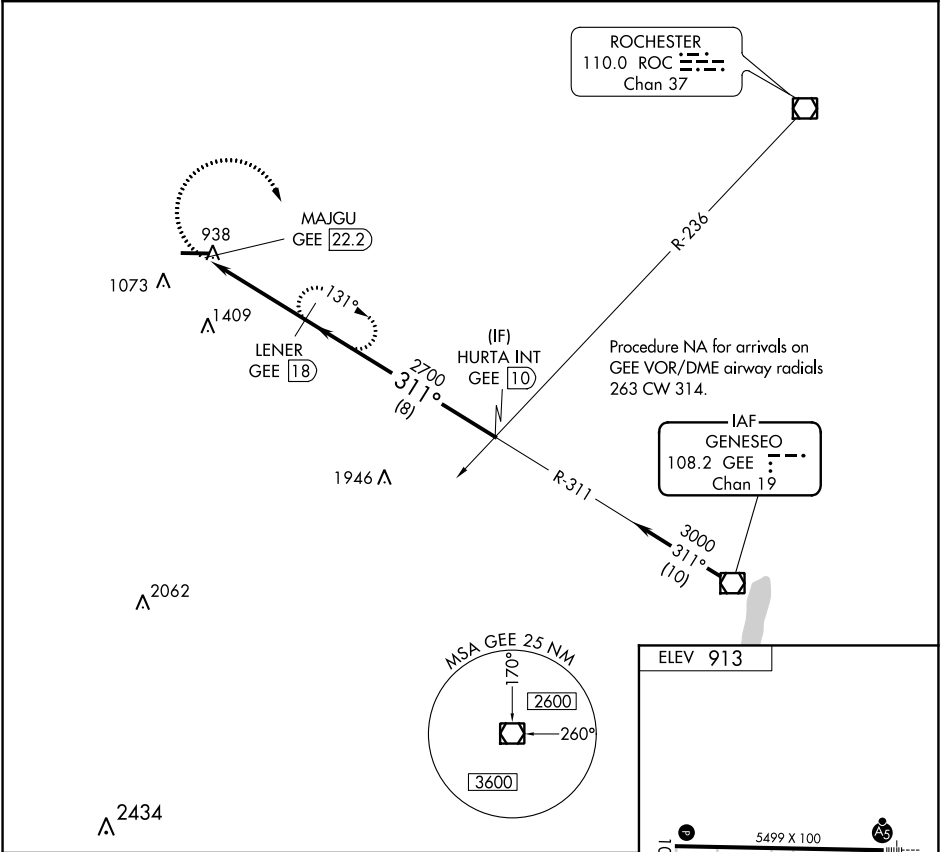


VOR/DME GEE	APP CRS	Rwy Idg	N/A
108.2	311°	TDZE	N/A
Chan 19		Apt Elev	913

VOR/DME-A
GENESEE COUNTY (GVQ)

When local altimeter setting not received, use Rochester altimeter setting and increase all MDA 120 feet; increase Cat C and D visibility ½ mile.	MISSED APPROACH: Climbing right turn to 3000 via GEE VOR/DME R-311 to LENER/18 DME and hold, continue to climb-in-hold to 3000.
---	---

AWOS-3PT 127.525	ROCHESTER APP CON 123.7 322.3	CINC DEL 121.8	UNICOM 122.7 (CTAF) 0
---------------------	----------------------------------	-------------------	--------------------------



CATEGORY	A	B	C	D
CIRCLING	1620-1 707 (800-1)	1620-1¼ 707 (800-1¼)	1620-2 707 (800-2)	1620-2¼ 707 (800-2¼)

REIL Rwy 10 0
HIRL Rwy 10-28 0