

WAAS CH 57925 W06A	APP CRS 059°	Rwy Idg 4201 TDZE 76 Apt Elev 81
--	------------------------	---

RNAV (GPS) RWY 6

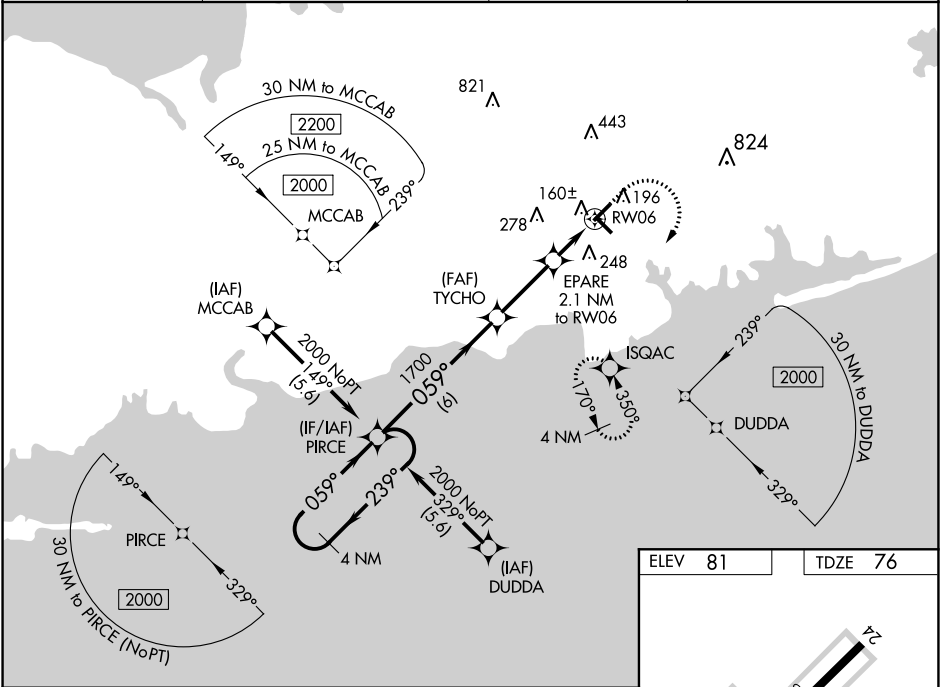
BROOKHAVEN (HWV)

⚠ DME/DME RNP-0.3 NA. Helicopter visibility reduction below $\frac{3}{4}$ SM NA. When local altimeter setting not received, use Isip altimeter setting and increase all DA 28 feet and all MDA 40 feet. Inoperative table does not apply to LNAV/VNAV. For inoperative MALSR, increase LPV all Cats visibility to $\frac{7}{8}$ mile, increase LNAV all Cats visibility to 1 mile. For inoperative MALSR when using Isip altimeter setting, increase LPV and LNAV/VNAV all Cats visibility to $\frac{7}{8}$ mile, increase LNAV all Cats visibility to 1 mile. Baro-VNAV and VDP NA with Isip altimeter setting. For uncompensated Baro-VNAV systems, LNAV/VNAV NA below -15°C (5°F) or above 54°C (130°F).

MALSR

MISSED APPROACH:
Climb to 600 then climbing right turn to 2000 direct ISQAC and hold.

ASOS 119.625	NEW YORK APP CON 120.05 343.75	CLNC DEL 133.2	UNICOM 122.8 (CTAF) 1
------------------------	--	--------------------------	---------------------------------



4 NM Holding Pattern

GP 3.00° TCH 51

CATEGORY	A	B	C	D
LPV DA	339- $\frac{3}{4}$	263 (300- $\frac{3}{4}$)		NA
LNAV/VNAV DA	326- $\frac{3}{4}$	250 (300- $\frac{3}{4}$)		NA
LNAV MDA	420- $\frac{3}{4}$	344 (400- $\frac{3}{4}$)		NA
C CIRCLING	560-1	479 (500-1)		NA

ELEV 81 TDZE 76

REIL Rwy 15, 24 and 33 1
MIRL Rwy 6-24 and 15-33 1

NE-2, 31 DEC 2020 to 28 JAN 2021

NE-2, 31 DEC 2020 to 28 JAN 2021