

WAAS CH 93733 W06A	APP CRS 063°	Rwy Idg 5950 TDZE 81 Apt Elev 81
--	------------------------	---

RNAV (GPS) RWY 6
OCEAN COUNTY (MTX)

V Circling Rwy 1432 NA at night. For uncompensated Baro-VNAV systems, LNAV/VNAV NA below -15°C (5°F) or above 54°C (130°F). DME/DME RNP -0.3 NA. Inop table does not apply to LPV. For inop MALSR, increase LNAV/VNAV all Cats and LNAV Cts A/B visibility to 1. When local altimeter setting not received, use Mc Guire Fld (Joint Base Mc Guire Dix Lakehurst) altimeter setting and increase all DA 41 feet and all MDA 60 feet; increase LNAV Cts C/D visibility $\frac{1}{2}$ mile and Circling Cat D visibility $\frac{1}{4}$ mile. For inop MALSR when using Mc Guire Fld (Joint Base Mc Guire Dix Lakehurst) altimeter setting, increase LPV all Cts visibility to $\frac{3}{4}$, LNAV/VNAV all Cts visibility to 1 $\frac{1}{2}$, LNAV Cts A/B visibility to 1, and LNAV Cts C/D visibility to 1 $\frac{1}{2}$. Helicopter visibility reduction below $\frac{3}{4}$ SM NA. VDP and Baro-VNAV NA when using Mc Guire Fld (Joint Base Mc Guire Dix Lakehurst) altimeter setting.

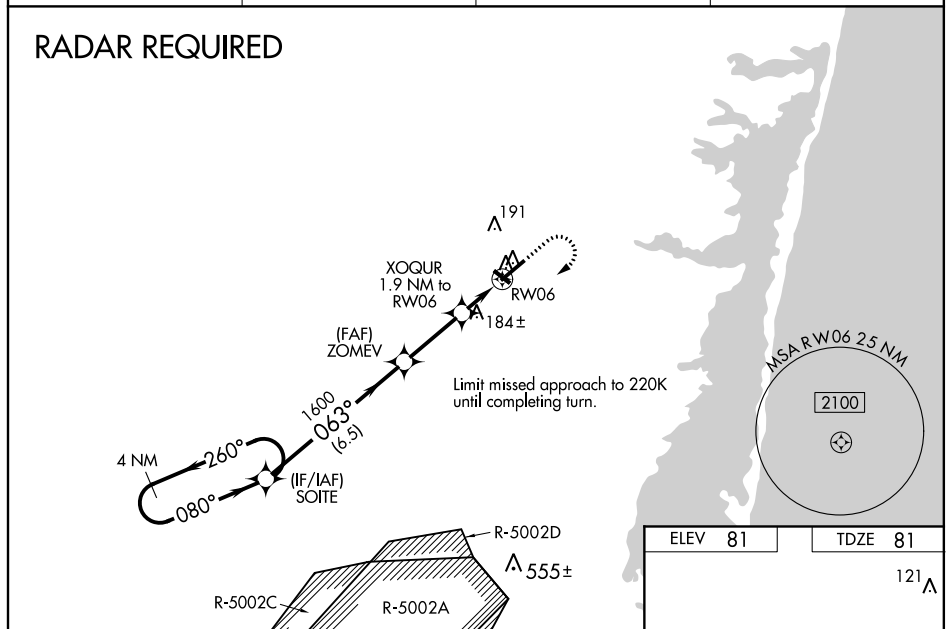
MALSR



MISSED APPROACH:
Climb to 600 then
climbing right turn
to 2000 direct
SOTTE and hold.

AWOS-3PT 119.875	MC GUIRE APP CON 126.475 363.8	GCO 121.725	UNICOM 122.7 (CTAF) 0
----------------------------	--	-----------------------	---------------------------------

RADAR REQUIRED



4 NM Holding Pattern

SOITE

ZOMEV

XOQUR 1.9 NM to RW06

600

2000

SOITE

260°

080°

063°

1600

*1.2 NM to RW06

*LNNAV only.

GP 3.00° TCH 56

6.5 NM

2.7 NM

0.7 NM

1.2 NM

CATEGORY	A	B	C	D
LPV DA	331- ³ / ₄ 250 (300- ³ / ₄)			
LNNAV/VNAV	405- ³ / ₄ 324 (400- ³ / ₄)			
LNNAV MDA	520- ³ / ₄ 439 (500- ³ / ₄)		520- ⁷ / ₈ 439 (500- ⁷ / ₈)	
C CIRCLING	520-1 439 (500-1)	560-1 479 (500-1)	580-1½ 499 (500-1½)	700-2 619 (700-2)

Diagram of the holding pattern geometry showing a 125° turn, a 3590 x 173 ft width, a 5950 x 100 ft length, and a 0.3% UP slope. The diagram also shows the 063° to RW06 turn.

MIRL Rwy 14-32 **L**
HIRL Rwy 6-24 **L**
REIL Rws 14, 24 and 32 **L**