

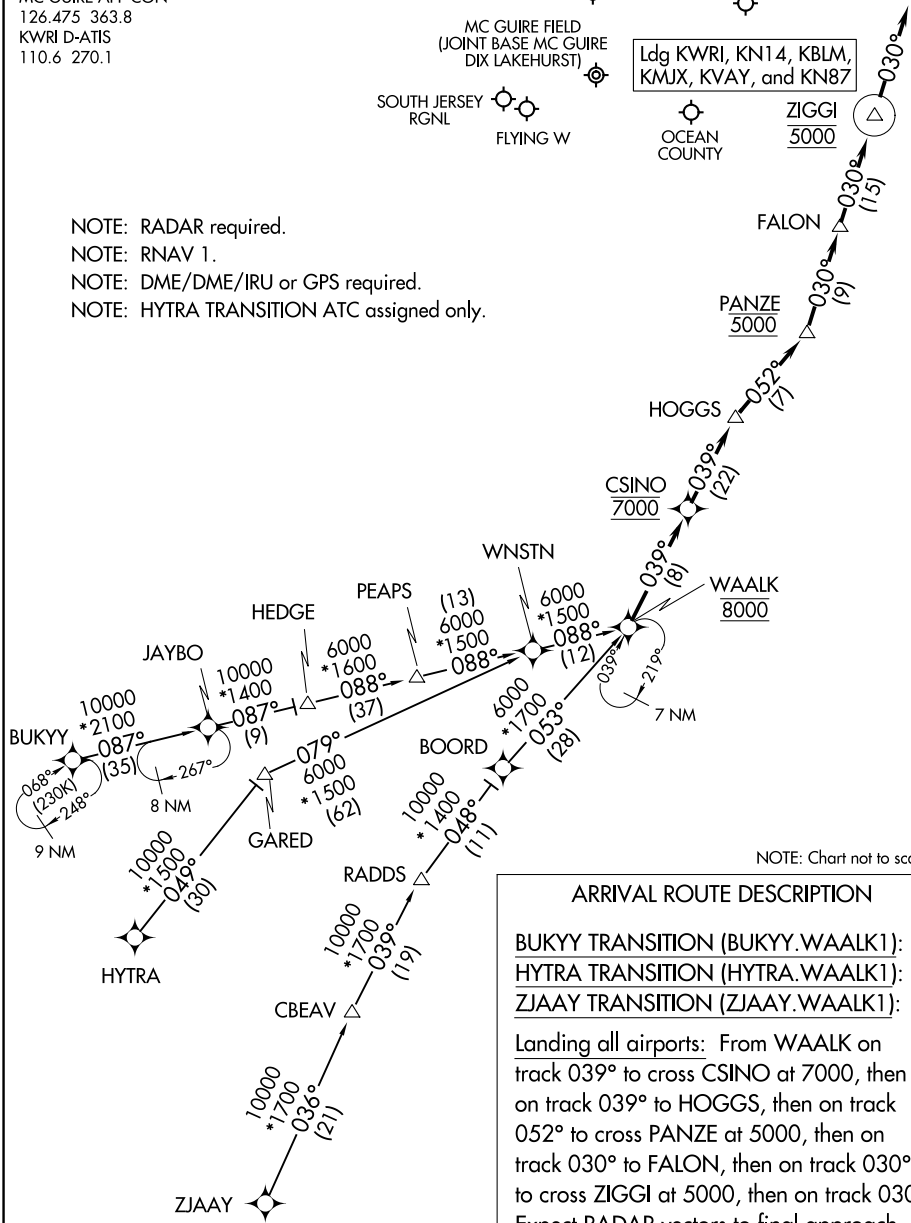
ATLANTIC CITY APP CON
124.6 327.125
MC GUIRE APP CON
126.475 363.8
KWRI D-ATIS
110.6 270.1

TRENTON-ROBBINSVILLE
MC GUIRE FIELD
(JOINT BASE MC GUIRE
DIX LAKEHURST)
SOUTH JERSEY
RGNL
FLYING W
OCEAN COUNTY
MONMOUTH
EXECUTIVE
Ldg KWRI, KN14, KBLM,
KMUX, KVAY, and KN87
ZIGGI
5000

NOTE: RADAR required.
NOTE: RNAV 1.
NOTE: DME/DME/IRU or GPS required.
NOTE: HYTRA TRANSITION ATC assigned only.

NE-2, 31 DEC 2020 to 28 JAN 2021

NE-2, 31 DEC 2020 to 28 JAN 2021



NOTE: Chart not to scale.

ARRIVAL ROUTE DESCRIPTION

BUKY Y TRANSITION (BUKY Y.WAALK1):
HYTRA TRANSITION (HYTRA.WAALK1):
ZJAAY TRANSITION (ZJAAY.WAALK1):

Landing all airports: From WAALK on track 039° to cross CSINO at 7000, then on track 039° to HOGGS, then on track 052° to cross PANZE at 5000, then on track 030° to FALON, then on track 030° to cross ZIGGI at 5000, then on track 030°. Expect RADAR vectors to final approach course.