

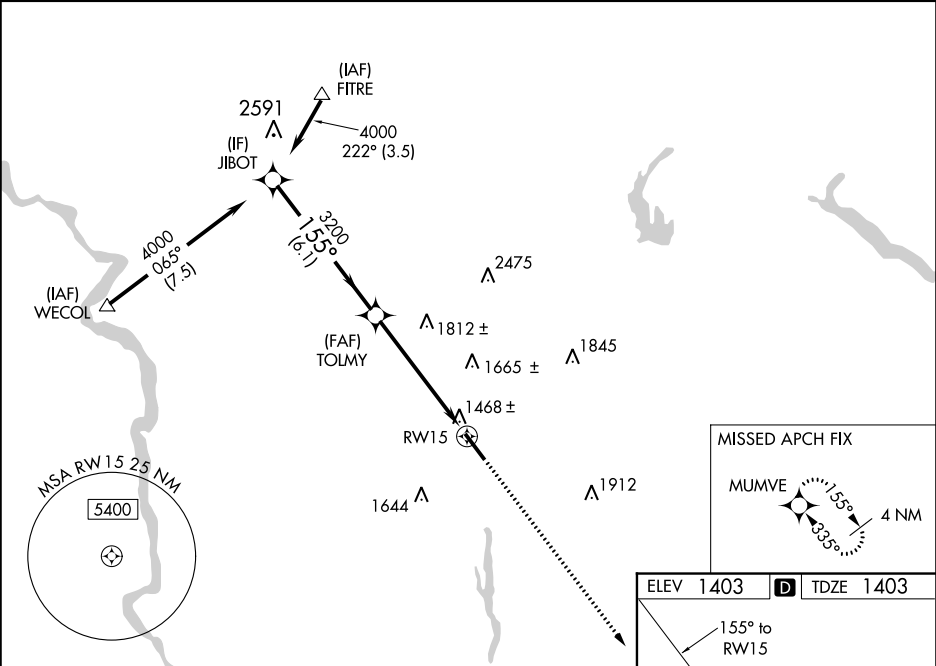
WAAS CH <b>56615</b> <b>W15A</b>	APP CRS <b>155°</b>	Rwy Ldg TDZE Apt Elev <b>1403</b> <b>1403</b>	<b>RNAV (GPS) RWY 15</b> SULLIVAN COUNTY INTL (MSV)
----------------------------------------	------------------------	-----------------------------------------------------------	--------------------------------------------------------

Baro-VNAV NA when using Newburgh altimeter setting. For uncompensated Baro-VNAV systems, LNAV/VNAV NA below -17°C (2°F) or above 46°C (114°F). DME/DME RNP-0.3 NA.

Helicopter visibility reduction below ¾ SM NA. When local altimeter setting not received, use Newburgh altimeter setting and increase LPV DA to 1858 and visibility all Cats ½ mile; increase LNAV/VNAV DA to 2077 and visibility Cats A/B/C ¼ mile, Cat D ½ mile; increase all MDA 220 feet and LNAV Cat B visibility ¼ mile, Cats C/D ¾ mile, Circling Cat B visibility ¼ mile, Cat C ¾ mile, Cat D ½ mile.

MISSED APPROACH: Climb to 3300 direct MUMVE and hold.

AWOS-3PT <b>124.725</b>	NEW YORK APP CON <b>132.75 363.1</b>	CLNC DEL <b>121.6</b>	UNICOM <b>122.8 (CTAF) 0</b>
----------------------------	-----------------------------------------	--------------------------	---------------------------------



Procedure				
Turn	JIBOT	TOLMY	RW15	MUMVE
NA	4000	3200		
GP 3.00°				
TCH 41				
	6.1 NM	5.4 NM		
CATEGORY	A	B	C	D
LPV DA	1653-1 250 (300-1)			
LNAV/VNAV DA	1872-1¾ 469 (500-1¾)			
LNAV MDA	1980-1 577 (600-1)	1980-1½ 577 (600-1½)	1980-1¾ 577 (600-1¾)	
CIRCLING	1980-1 577 (600-1)	1980-1½ 577 (600-1½)	1980-2 577 (600-2)	

