

APP CRS	Rwy Ldg	5798
335°	TDZE	1390
	Apt Elev	1403

RNAV (GPS) RWY 33
SULLIVAN COUNTY INTL (MSV)

T DME/DME RNP-0.3 NA. When local altimeter setting not received, use Newburgh altimeter setting and increase all MDA 220 feet, increase LNAV Cats C/D and Circling Cat C visibility $\frac{1}{2}$ mile, Circling Cat D visibility $\frac{1}{4}$ mile. VDP NA when using Newburgh altimeter setting.

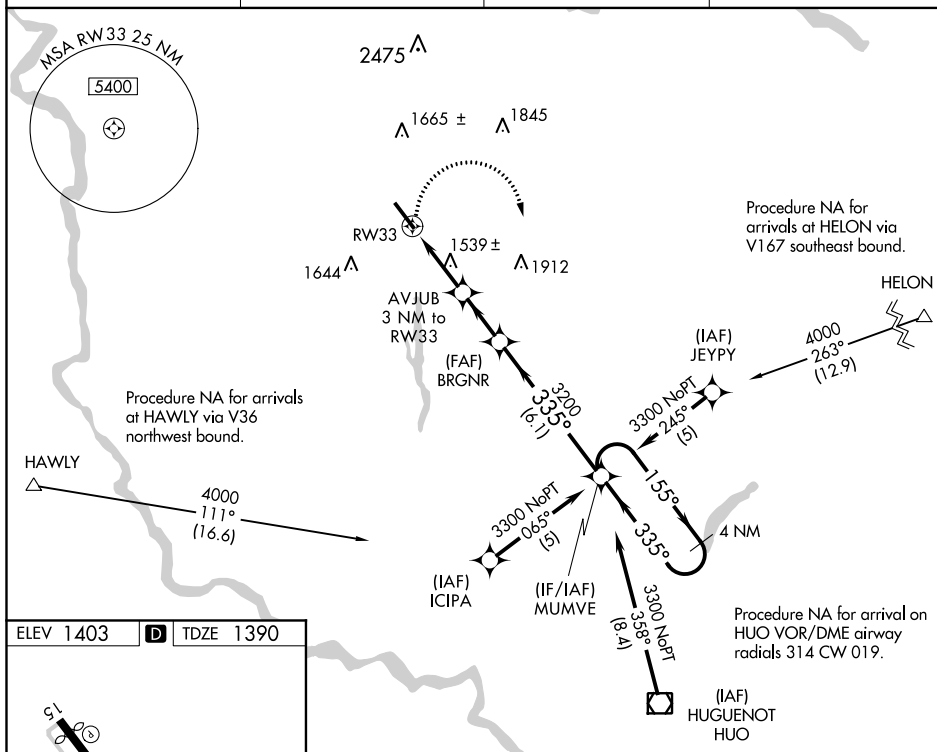
MISSED APPROACH: Climbing right turn to 3300 direct MUMVE and hold.

AWOS-3PT
124.725

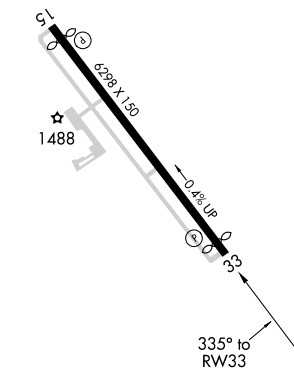
NEW YORK APP CON
132-75 363-1

CLNC DEL
121.6

UNICOM
122.8 (CTAF) **L**



ELEV 1403	D	TDZE 1390
-----------	----------	-----------



REIL Rwy 15 and 33 **L**
HIRL Rwy 15-33 **L**

VGS and descent angles not coincident
(VGS Angle 3.00/TCH 39).

4 NM Holding Pattern

MUMVE

BRGNR

AVJUB
3 NM to RW33

$\leq 3.23^\circ$
TCH 39

RW33

1.2 NM to RW33

1.2 NM

1.8 NM

2.2 NM

6.1 NM

3300

3200

155°

335°

CATEGORY	A	B	C	D
LNAV MDA	1820-1 430 (500-1)		1820-1¼ 430 (500-1¼)	1820-1½ 430 (500-1½)
CIRCLING	1900-1 497 (500-1)		1900-1½ 497 (500-1½)	1960-2 557 (600-2)