

FORT DRUM, NEW YORK

ILS or LOC RWY 21

LOC/DME I- GTB 108.5 Chan 22	APCH CRS 209°	Rwy ldg 10,000 TDZE 677 Arprt Elev 690	AL-5754 [USA]	WHEELER-SACK AAF (KGTB)
---	-------------------------	---	---------------	-------------------------

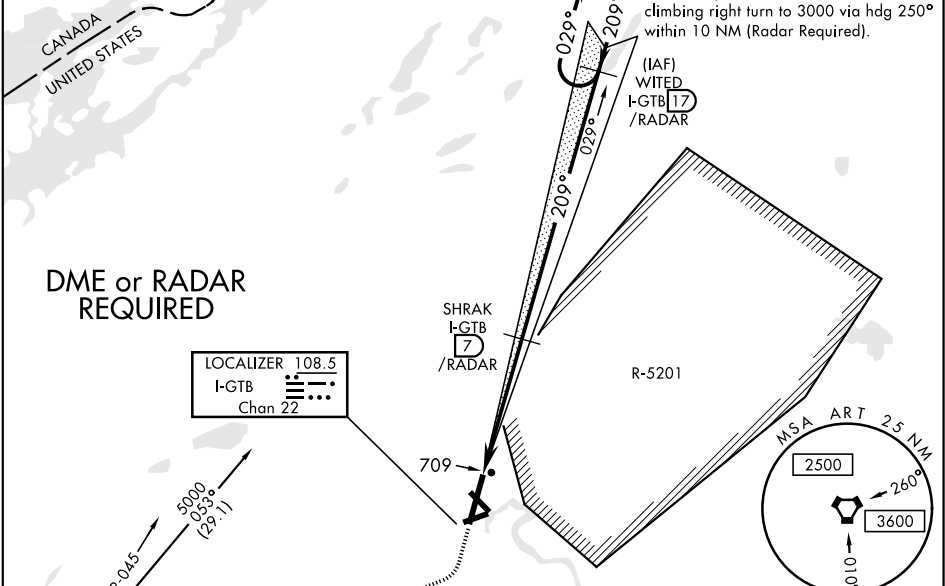
▼ * When ALS inop, increase CAT ABCDE vis to ¾ mile.
** When ALS inop, increase CAT ABC vis to 1 mile,
CAT DE vis to 1 ¼ miles.

ALSF-1

MISSED APPROACH: Climb to 1200, then climbing right turn to 5000 direct ART VORTAC and hold.
Continue climb-in-hold to 5000.

ATIS 119.525	WHEELER-SACK APP CON 124.875 257.6	WHEELER-SACK TOWER 118.75 290.25	GND CON 121.9 229.8	CLNC DEL 121.9	ASR/PAR
------------------------	--	--	-------------------------------	--------------------------	---------

*** Circling NA E of Rwy 21 and 33. Circling NA for CAT E to Rwy 8-26 and 15-33. Circling NA for CAT B, C and D to Rwy 8.



1200 5000 ART

VGSI and ILS glidepath not coincident

.9 NM to RW 21

1.8

2.7

2400

2400

209° 029°

5000

GS 3.00° TCH 63

5.2 NM

CATEGORY	A	B	C	D	E
S-ILS 21 *	877-½		200	(200-½)	
S-LOC 21 **	1020-½	343 (400-½)	1020-¾	343 (400-¾)	
CIRCLING ***	1180-1	490 (500-1)	1180-1½ 490 (500-1½)	1240-2 550 (600-2)	1520-3 830 (900-3)

ELEV 690 TDZE 677

209° 5.2 NM from FAF

A1 P

876

51

A5

763

TWR

3000 x 150

4501 x 150

720

Rwy 3 ldg 8637'

MIRL Rwy 8-26
HIRL Rwy 3-21, 15-33

FAF to MAP 5.2 NM

Knots	120	140	160	180	200
Min:Sec	2:36	2:14	1:57	1:44	1:34

NE-2, 31 DEC 2020 to 28 JAN 2021

NE-2, 31 DEC 2020 to 28 JAN 2021