
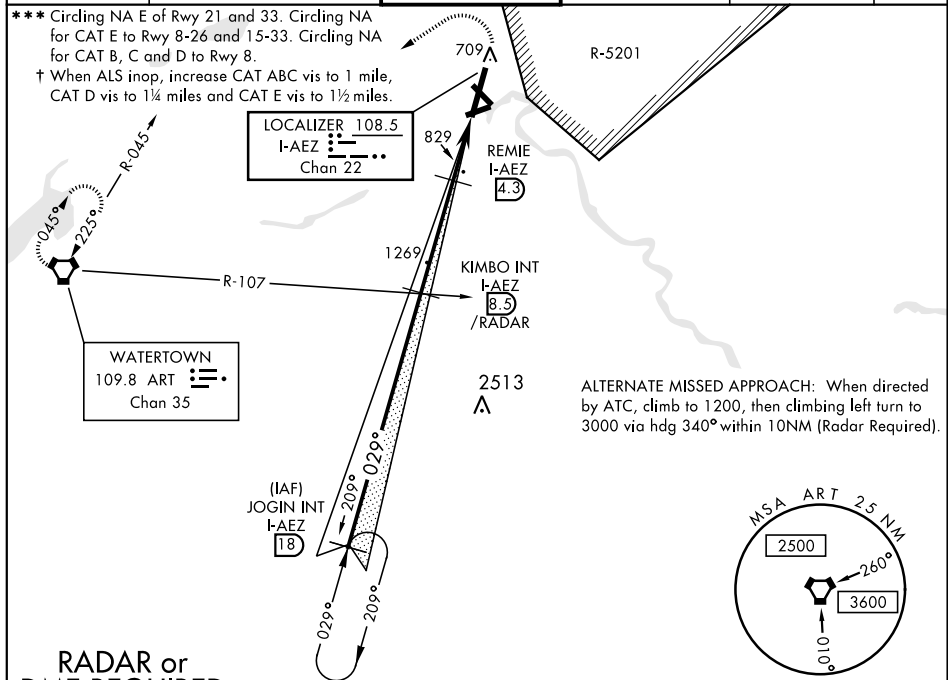


ILS or LOC RWY 3

LOC/DME 1-AEZ 108.5 Chan 22		APCH CRS 029°	Rwy Idg TDZE 685 Arpt Elev 690	AL-5754 [USA]		WHEELER-SACK AAF (KGTB)	
▽ * When ALS inop, increase CAT ABCDE vis to ¾ mile. ** When ALS inop, increase CAT A vis to 1 mile, CAT B vis to 1 ½ miles, CAT C vis to 2 ½ miles, CAT D vis to 2 ¾ miles, and CAT E vis to 3 miles.				ALSF-1 		MISSED APPROACH: Climb to 1200, then climbing left turn to 5000 direct ART VORTAC and hold. Continue climb-in-hold to 5000.	
ATIS 119.525	WHEELER-SACK APP CON 124.875 257.6		WHEELER-SACK TOWER 118.75 290.25		GND CON 121.9 229.8	CLNC DEL 121.9	ASR/PAR

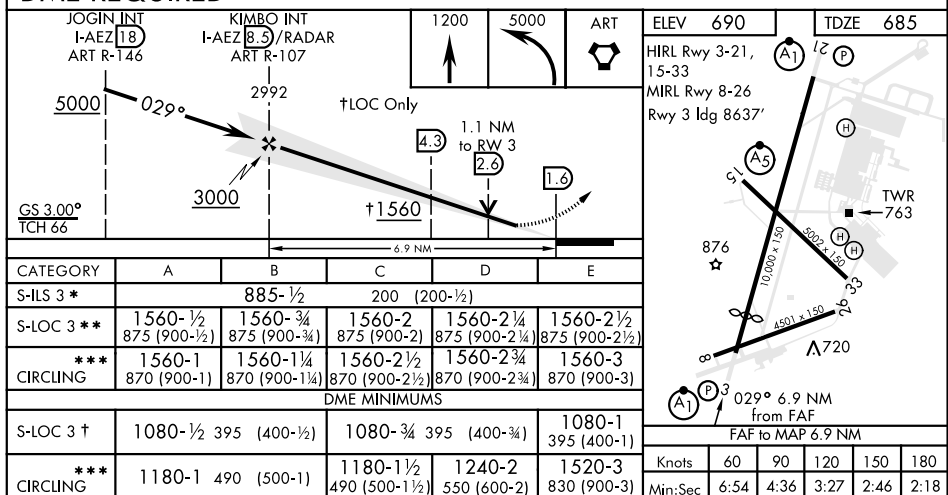
*** Circling NA E of Rwy 21 and 33. Circling NA for CAT E to Rwy 8-26 and 15-33. Circling NA for CAT B, C and D to Rwy 8.

† When ALS inop, increase CAT ABC vis to 1 mile, CAT D vis to $1\frac{1}{4}$ miles and CAT E vis to $1\frac{1}{2}$ miles.



ALTERNATE MISSED APPROACH: When directed by ATC, climb to 1200, then climbing left turn to 3000 via hdg 340° within 10NM (Radar Required).

RADAR or
DME REQUIRED



FORT DRUM, NEW YORK

44°03'N-75°43'W

WHEELER-SACK AAF (KG TB)

ILS or LOC RWY 3

NE-2. 31 DEC 2020 to 28 JAN 2021

NE-2, 31 DEC 2020 to 28 JAN 2021