

FORT DRUM, NEW YORK

RNAV (GPS) RWY 3

WAAS CH 937.14 W03A	APCH CRS 029°	Rwy ldg TDZE 685 Arpt Elev 690
---------------------------	------------------	--------------------------------------

AL-5754 (USA)

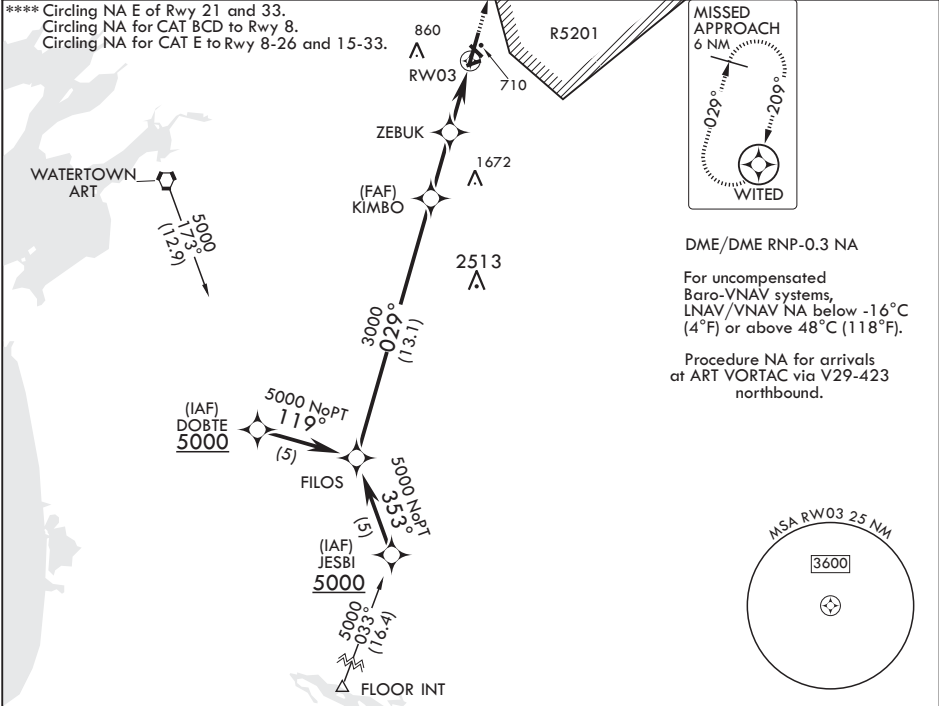
WHEELER SACK AAF (KGTB)

⚠ * When ALS inop, increase CAT ABCDE vis to 3/4 mile.
** When ALS inop, increase CAT ABCDE vis to 1 1/4 miles.
*** When ALS inop, increase CAT AB vis to 1 mile, CAT C vis to 1 1/4 miles, CAT DE vis to 1 1/2 miles.

ALS-1

MISSED APPROACH: Climb to 4000 direct WITED and hold.

ATIS 119.525	APP CON/DEP CON 124.875 257.6	TOWER 118.75 290.25	GND CON 121.9 229.8	CLNC DEL 121.9	ASR/PA
-----------------	----------------------------------	------------------------	------------------------	-------------------	--------



FILOS	5000	029°	KIMBO	ZEBUK 3.6 NM to RWY 03	4000 WITED	ELEV 690	TDZE 685
GP 3.00° TCH 66	3000			† 1880	† LNAV only	Rwy 3 ldg 8637'	
				† 1.2 NM to RWY 03			
				3.3 NM			
				3.6 NM			
CATEGORY	A	B	C	D	E		
LPV DA *	885-1/2		200	(200-1/2)			
LNAV/VNAV DA **	1040-3/4		355	(400-3/4)			
LNAV MDA ***	1140-1/2 455 (500-1/2)		1140-3/4 455 (500-3/4)	1140-1 455 (500-1)			
CIRCLING ****	1180-1 490 (500-1)		1180-1 1/2 490 (500-1 1/2)	1240-2 550 (600-2)	1520-3 830 (900-3)		

FORT DRUM, NEW YORK

44°03'N - 75°43'W

WHEELER SACK AAF (KGTB)

Amdt 1A 12DEC13

RNAV (GPS) RWY 3

NE-2, 31 DEC 2020 to 28 JAN 2021

NE-2, 31 DEC 2020 to 28 JAN 2021