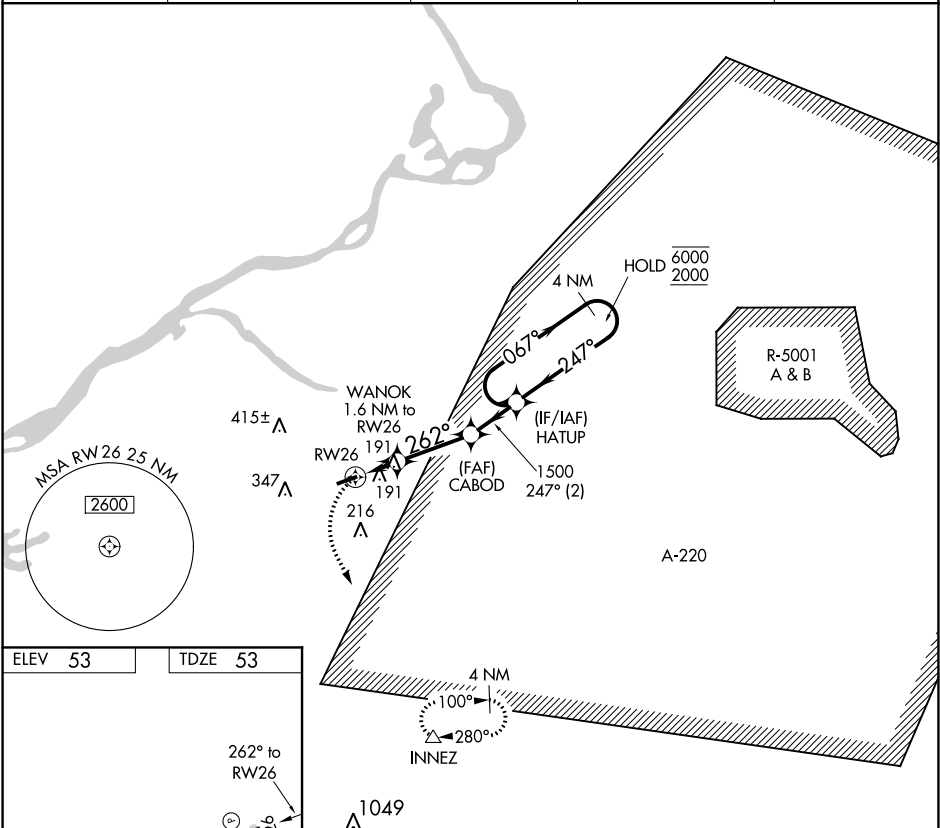


APP CRS	Rwy Idg	3881
262°	TDZE	53
	Apt Elev	53

RNAV (GPS) RWY 26
SOUTH JERSEY RGNL (VAY)

RNP APCH.	MISSED APPROACH: Climbing left turn to 2000 direct INNEZ and hold.
Rwy 26 helicopter visibility reduction below 1 SM NA. Procedure NA at night.	

ASOS 119.325	MC GUIRE APP CON 126.475 363.8	GCO 121.725	UNICOM 122.8 (CTAF)	123.3
-----------------	-----------------------------------	----------------	------------------------	-------



ELEV 53	TDZE 53				
MIRL Rwy 8-26		REIL Rwy 8 and 26			
CATEGORY		A	B	C	D
LNAV MDA		480-1	427 (500-1)	NA	
CIRCLING		520-1	467 (500-1)	NA	

NE-2, 31 DEC 2020 to 28 JAN 2021

NE-2, 31 DEC 2020 to 28 JAN 2021