

WAAS CH 42906 W33A	APP CRS 327°	Rwy Idg 11821 TDZE 498 Apt Elev 504
--	------------------------	--

RNAV (GPS) RWY 33

GRIFFISS INTL (RME)

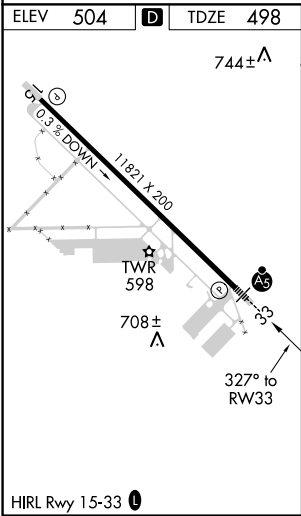
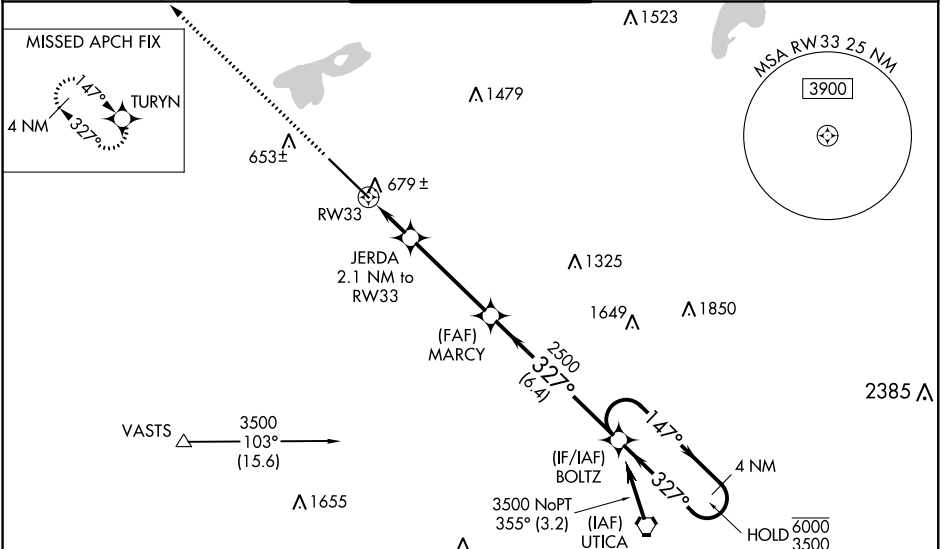
RNP APCH.

▼ Circling NA southwest of Rwy 15-33. Baro-VNAV and VDP NA when using Syracuse altimeter setting. Rwy 33 helicopter visibility reduction below ¾ SM NA. For uncompensated Baro-VNAV systems, LNAV/VNAV NA below -23°C or above 54°C. For inop ALS, increase LPV visibility to ¾ SM and LNAV/VNAV visibility to 1 ¾ SM and LNAV Cat A/B visibility to 1 SM. For inop ALS when using Syracuse Intl altimeter setting, increase LNAV Cat A/B visibility to 1 SM. When local altimeter setting not received, use Syracuse Intl altimeter setting: increase LPV DA to 869 feet, increase LNAV/VNAV DA to 1051 feet; increase all MDAs 100 feet and visibility LNAV Cat C/D and Circling Cat B/C visibility ¼ SM.

MALSR

MISSED APPROACH:
Climb to 3500 direct
TURYN and hold.

ATIS 118.7	SYRACUSE APP CON 127.425 290.45	GRIFFISS TOWER ★ 118.1 (CTAF) 0 291.7	GND CON 121.9	UNICOM 122.95
----------------------	---	---	-------------------------	-------------------------



Procedure NA for arrival on UCA VORTAC
airway radials 292 CW 039.

3500 TURYN

JERDA 2.1 NM to RW33

MARCY 2500

BOLTZ 4 NM Holding Pattern

GP 3.00° TCH 56

CATEGORY	A	B	C	D
LPV DA	784-¾	286 (300-¾)		
LNAV/VNAV DA	966-1¼	468 (500-1¼)		
LNAV MDA	1040-¾ 542 (600-¾)	1040-1⅞ 542 (600-1⅞)		
CIRCLING	1140-1 636 (700-1)	1260-1 756 (800-1)	1400-2¾ 896 (900-2¾)	1640-3 1136 (1200-3)