

WAAS CH 53734 W22A	APP CRS 224°	Rwy Idg 4633 TDZE 437 Apt Elev 437
--	------------------------	---

RNAV (GPS) RWY 22

ALLEN C PERKINSON BLACKSTONE AAF (BKT)

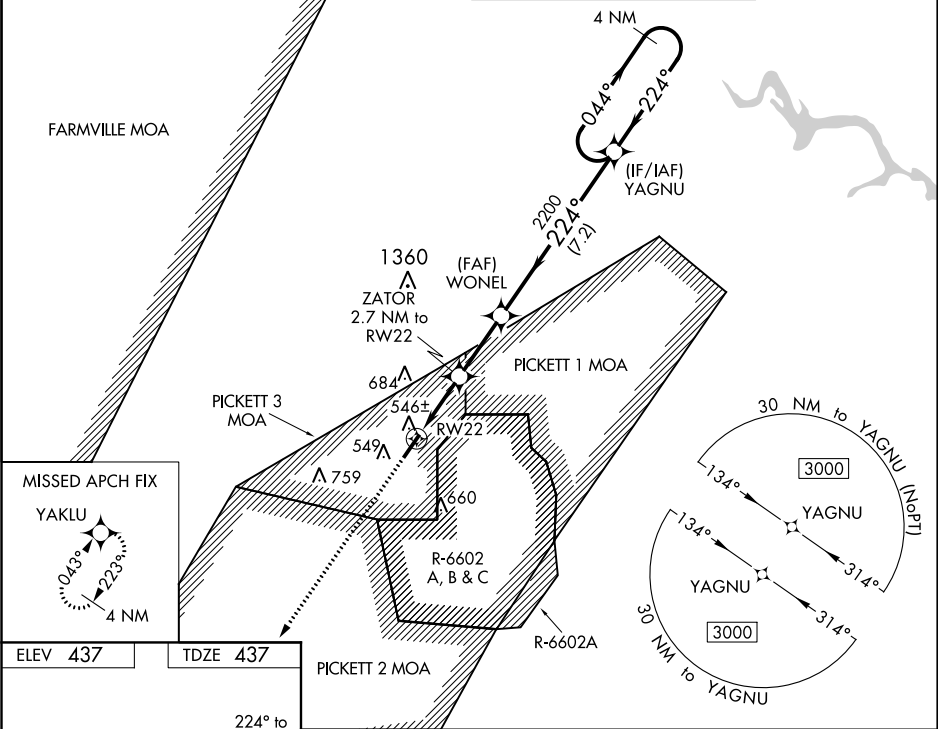
▼

▲ NA

Use South Hill altimeter setting. DME/DME RNP-0.3 NA.
Baro-VNAV NA. Rwy 22 helicopter visibility reduction below ¾ SM NA.
Circling NA E of Rwy 4-22.

MISSED APPROACH: Climb to 3000 direct YAKLU and hold.

AWOS-3 119.225	WASHINGTON CENTER 118.75 377.1	BLACKSTONE TOWER ★ 126.2 241.0	CTAF 126.2
--------------------------	--	--	----------------------



ELEV 437

TDZE 437

▲ 510

TWR

496±

224° to RWY 22

5335 X 150

0.7% UP

483

470

447

3000

YAKLU

*INAV only.

RWY 22

ZATOR 2.7 NM to RWY 22

WONEL 2200

*1340

2200

224°

044°

3000

4 NM Holding Pattern

GP 3.00°

TCH 60

CATEGORY	A	B	C	D
LPV DA	742-1	305 (400-1)		NA
LNNAV/VNAV DA	751-1	314 (400-1)		NA
LNNAV MDA	860-1	423 (500-1)	860-1¼ 423 (500-1¼)	NA
CIRCLING	920-1	483 (500-1)	1040-1¾ 603 (700-1¾)	NA