

LANGLEY AFB (KLFI)

TACAN LFI Chan 70	APCH CRS 073°	Rwy Idg 10,002 TDZE 8 Arpt Elev 8
-----------------------------	-------------------------	--

JAL-185 [USAF]

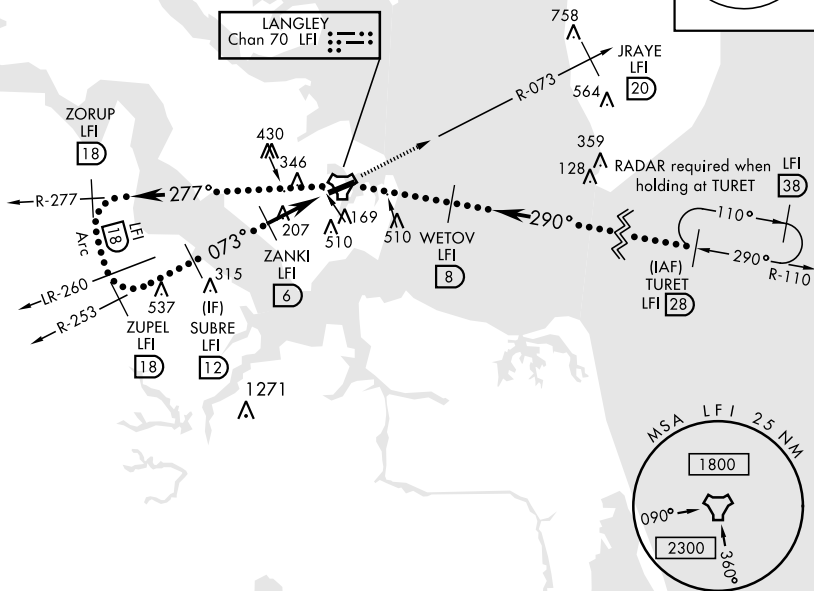
* When ALS inop, increase CAT CDE vis to 1 3/8 miles.
** Circling S of Rwy 8-26 not authorized.

ALSF-1

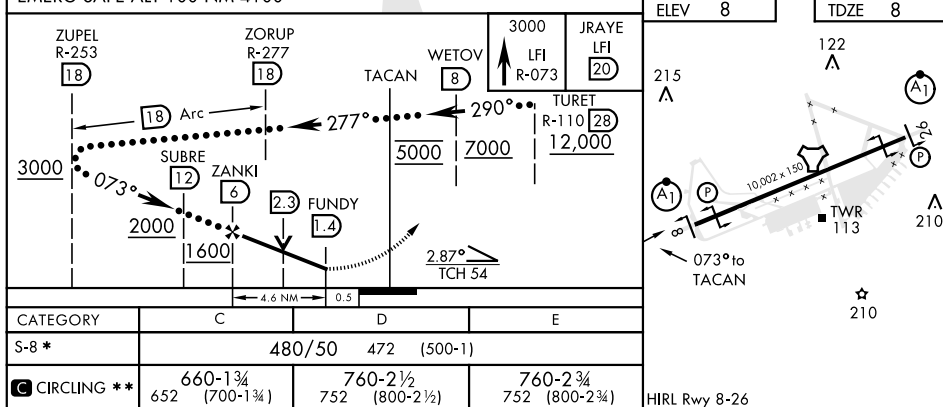
MISSED APPROACH: Climb to 3000 via LFI R-073 to 20 DME (JRAYE), then as instructed by ATC.

ATIS ★ 270.1	NORFOLK APP CON 125.7 335.625	LANGLEY TOWER ★ 125.0 253.5	GND CON 121.7 275.8	CLNC DEL 118.85 257.625
-----------------	----------------------------------	--------------------------------	------------------------	----------------------------

Expect radar vectors to IAF or Final Approach course.



EMERG SAFE ALT 100 NM 4100



HAMPTON, VIRGINIA

37°05'N-76°21'W

LANGLEY AFB (KLFI)

Amdt 5 22JUN17

HI-TACAN Z RWY 8