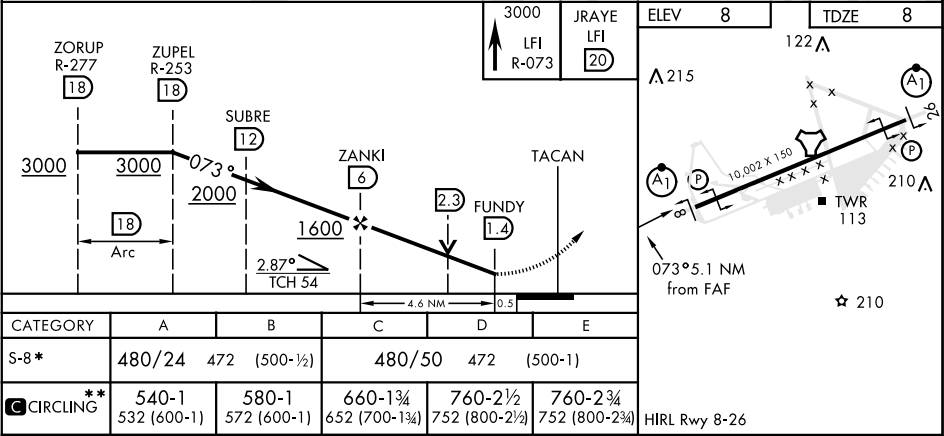
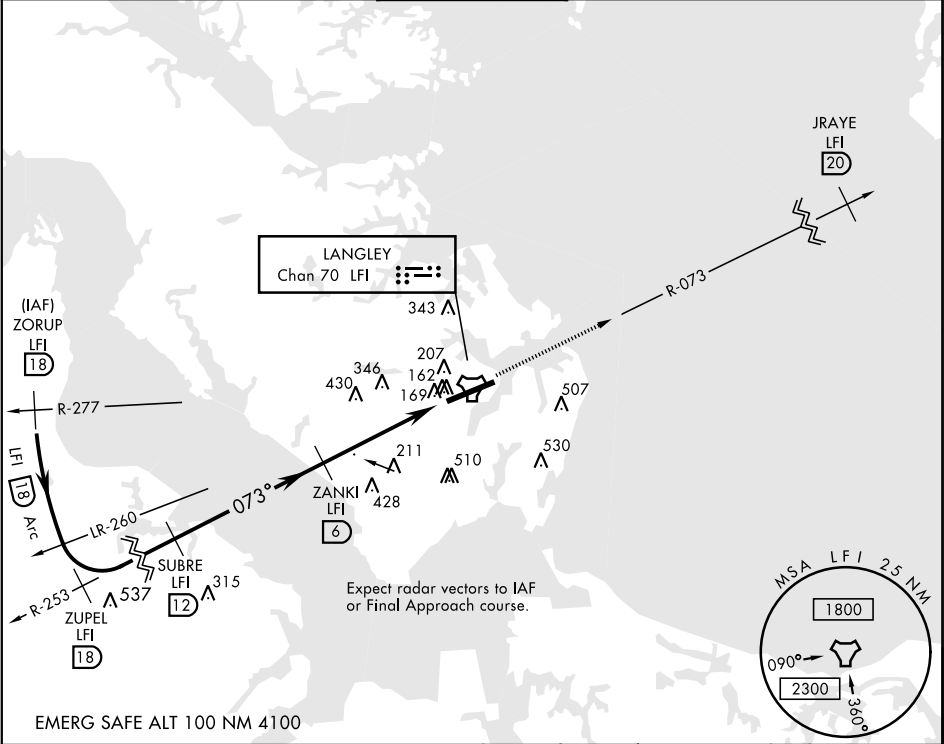


TACAN Y RWY 8

TACAN LFI Chan 70	APCH CRS 073°	Rwy ldg 10,002 TDZE 8 Arpt Elev 8	AL-185 [USAF]	LANGLEY AFB (KLFi)
*When ALS inop, increase CAT AB RVR to 55 and vis to 1 mile, CAT CDE vis to 1 3/8 miles. **Circling S of Rwy 8-26 not authorized.			ALSF-1 A1	MISSED APPROACH: Climb to 3000 via LFI R-073 to 20 DME (JRAYE), then as instructed by ATC.
ATIS ★ 270.1	NORFOLK APP CON 125.7 335.625	LANGLEY TOWER ★ 125.0 253.5	GND CON 121.7 275.8	CLNC DEL 118.85 257.625



TACAN Y RWY 8

NE-3, 31 DEC 2020 to 28 JAN 2021

NE-3, 31 DEC 2020 to 28 JAN 2021