

ILS or LOC/DME RWY 10

LOC I-NGU <u>108.95</u>	APCH CRS 100°	Rwy Idg 8071 TDZE 14 Arprt Elev 15
-----------------------------------	-------------------------	---------------------------------------------------------------

AL-290 [USN]

NORFOLK NS (CHAMBERS FIELD) (KNGU)

T * When ALS inop, increase vis to $\frac{3}{4}$ mile.
 ** When ALS inop, increase CAT AB vis to 1 mile,
 CAT CDE vis to $1\frac{3}{8}$ miles.



MISSED APPROACH: Climbing left turn to 2100 via NGU TACAN R-053 to RUVNE and hold.

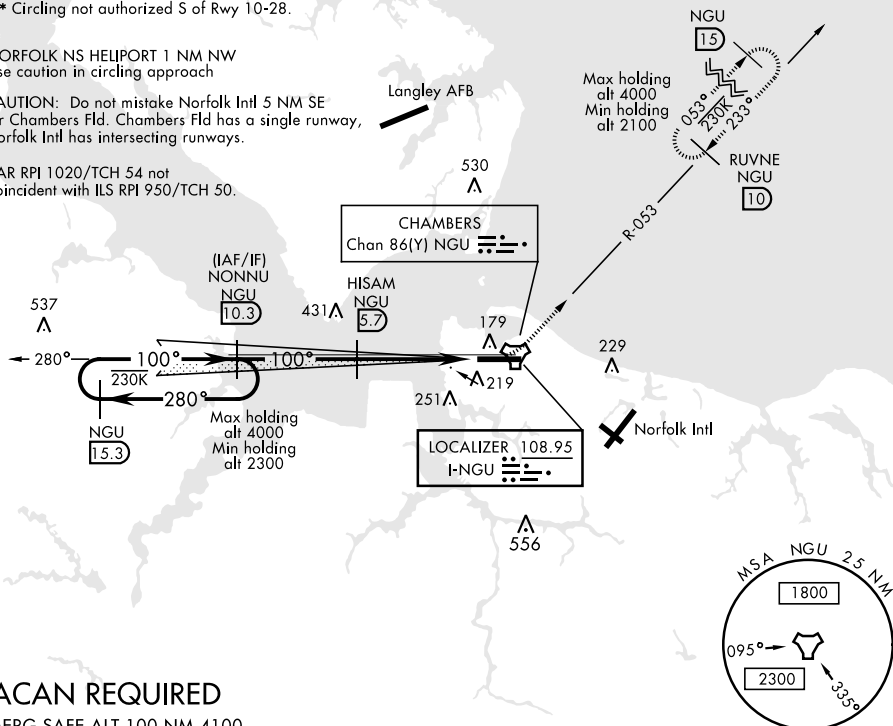
ATIS 118.425 342.0	NORFOLK APP CON 118.9 353.7	CHAMBERS TOWER 124.3 379.15	GND CON 121.8 370.85	CLNC DEL 120.7 339.8	ASR/PAR
-----------------------	--------------------------------	--------------------------------	-------------------------	-------------------------	---------

*** Circling not authorized S of Rwy 10-28.

NORFOLK NS HELIPORT 1 NM NW
Use caution in circling approach

CAUTION: Do not mistake Norfolk Intl 5 NM SE for Chambers Fld. Chambers Fld has a single runway, Norfolk Intl has intersecting runways.

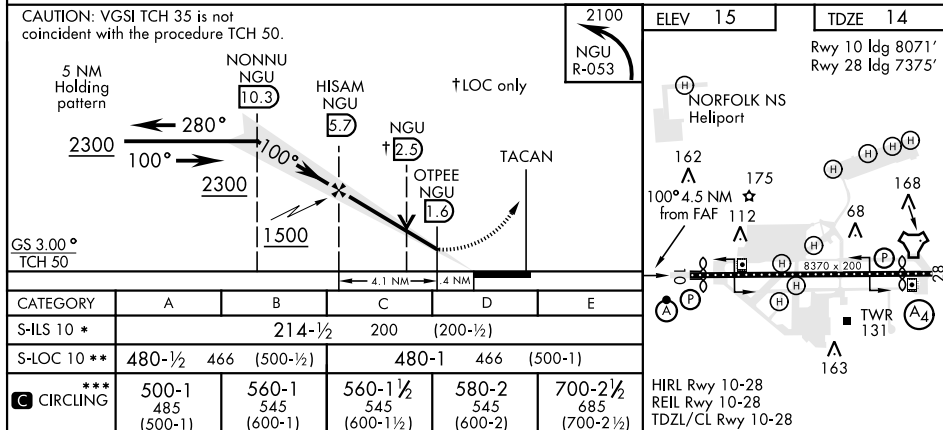
PAR RPI 1020/TCH 54 not
coincident with ILS RPI 950/TCH 50.



TACAN REQUIRED

EMERG SAFE ALT 100 NM 4100

CAUTION: VGSI TCH 35 is not coincident with the procedure TCH 50.



NORFOLK, VIRGINIA

36° 56' N-76° 17' W

NORFOLK NS (CHAMBERS FIELD) (KNGU)

Amdt 6 26MAR20

ILS or LOC/DME RWY 10