

NORFOLK, VIRGINIA

RNAV (GPS) RWY 28

APCH CRS	Rwy Idg
280°	7375
TDZE	14
Arpt Elev	15

AL-290 [USN]

NORFOLK NS (CHAMBERS FIELD) (KNGU)

▼ \* When ALS inop, increase vis to 1 1/8 mile. Helicopter vis reduction below 3/4 NA.

\*\* When ALS inop, increase CAT AB vis to 1 mile; CAT CDE vis to 1 1/8 miles.

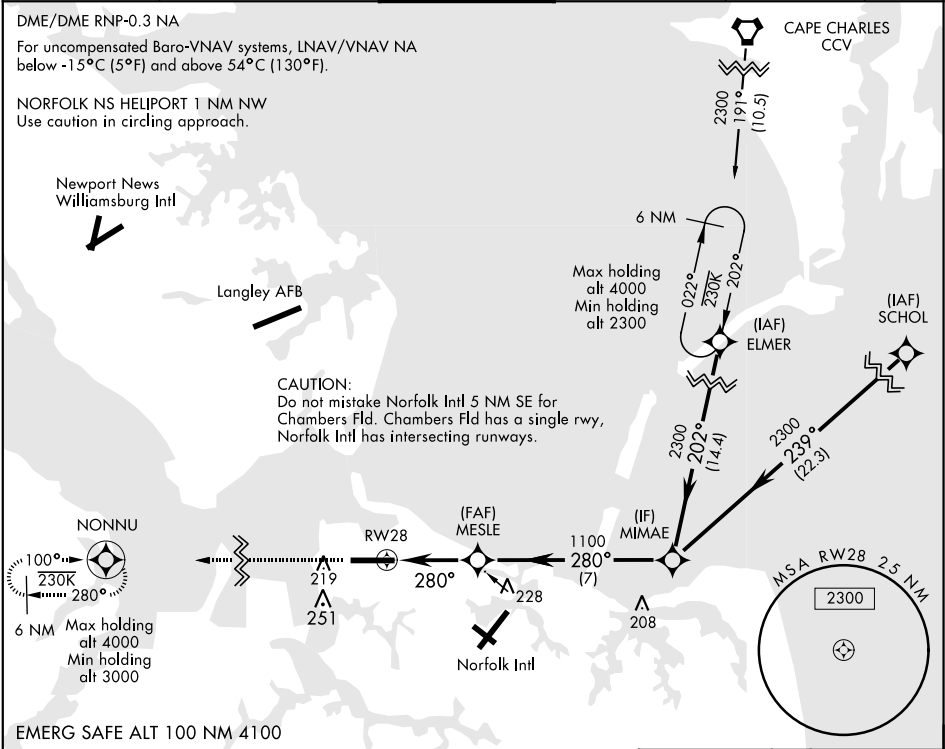
\*\*\* Circling not authorized S of Rwy 10-28.

SSALS

A4

MISSED APPROACH: Climb to 3000 direct NONNU and hold, continue climb in hold to 3000.

ATIS	NORFOLK APP CON	CHAMBERS TOWER	GND CON	CLNC DEL	ASR/PAR
118.425 342.0	118.9 353.7	124.3 379.15	121.8 370.85	120.7 339.8	



3000

NONNU

VGSI and RNAV glidepath not coincident (VGSI angle 3.00/TCH 36).

↑ LNAV only

MIMAE

2300

↑ 1.3 NM to RW28

MESLE

1100

GP 3.00° TCH 45

3.3 NM

CATEGORY	A	B	C	D	E
LNAV/VNAV DA *	400-7/8		386	(400-7/8)	
LNAV MDA **	460-3/4	446 (500-3/4)	460-1	446	(500-1)
CIRCLING ***	500-1 485 (500-1)	560-1 545 (600-1)	560-1 1/2 545 (600-1 1/2)	580-2 565 (600-2)	700-2 1/2 685 (700-2 1/2)

ELEV 15

TDZE 14

NORFOLK NS Heliport

Rwy 10 Idg 8071'  
Rwy 28 Idg 7375'

162 175 112 68 168 163

280° to RW28

TWR 131

HIRL Rwy 10-28  
REIL Rwy 10-28  
TDZL/CL Rwy 10-28

NORFOLK, VIRGINIA  
Amdt 5 26MAR20

36°56'N-76°17'W

NORFOLK NS (CHAMBERS FIELD) (KNGU)

RNAV (GPS) RWY 28

NE-3, 31 DEC 2020 to 28 JAN 2021

NE-3, 31 DEC 2020 to 28 JAN 2021