

# TACAN RWY 10

TACAN NGU Chan <b>86(Y)</b>	APCH CRS <b>097°</b>	Rwy Idg TDZE Arpt Elev <b>8071</b> <b>14</b> <b>15</b>
--------------------------------	-------------------------	---

AL-290 [USN]

NORFOLK NS (CHAMBERS FIELD) (KNGU)

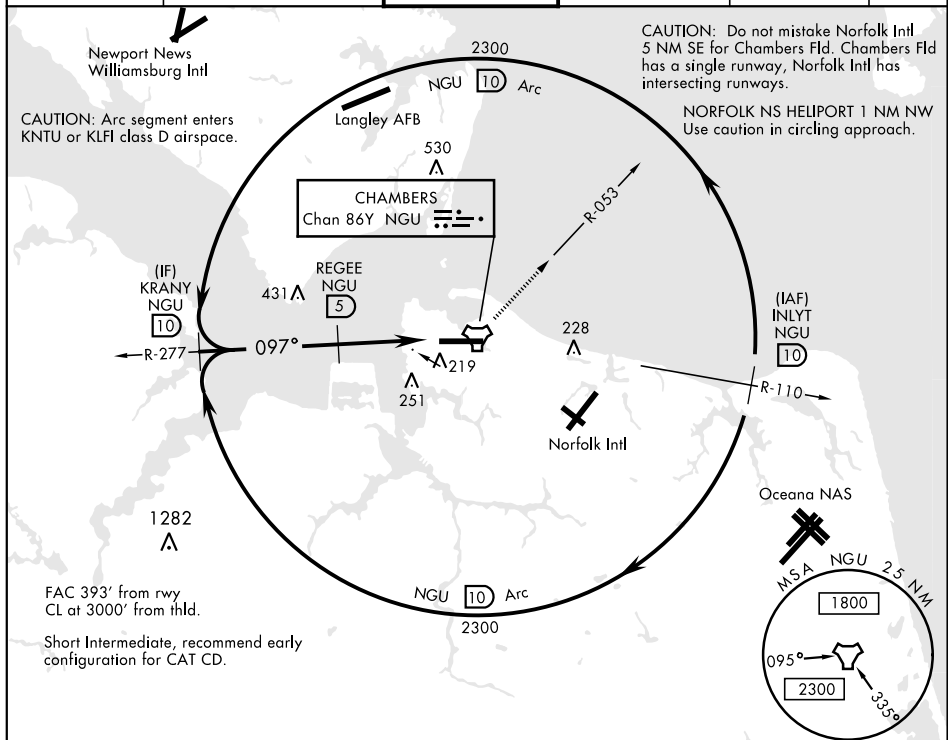
▼ \* When ALS inop, increase CAT AB vis to 1 mile,  
CAT CD vis to 1½ miles.  
\*\* Circling not authorized S of Rwy 10-28.

ALSF-2



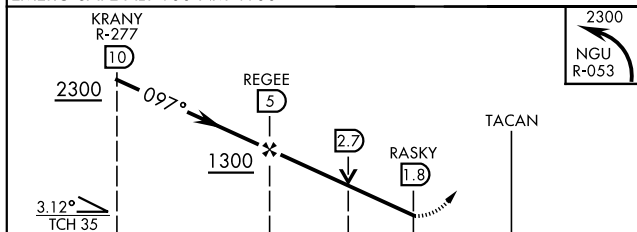
MISSED APPROACH: Climbing left turn to 2300 on  
NGU TACAN R-053 then as directed by ATC.

ATIS <b>118.425 342.0</b>	NORFOLK APP CON <b>118.9 353.7</b>	CHAMBERS TOWER <b>124.3 379.15</b>	GND CON <b>121.8 370.85</b>	CLNC DEL <b>120.7 339.8</b>	ASR/PAR
------------------------------	---------------------------------------	---------------------------------------	--------------------------------	--------------------------------	---------

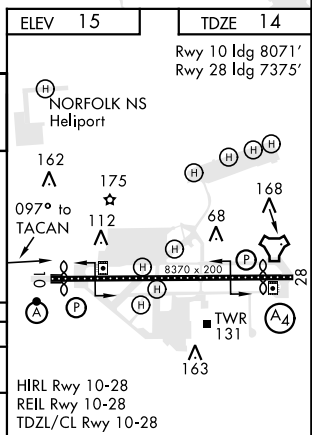


## RADAR REQUIRED

EMERG SAFE ALT 100 NM 4100



CATEGORY	A	B	C	D
S-10*	520-½ 506 (600-½)	520-1 506 (600-1)		
CIRCLING**	520-1 505 (600-1)	560-1 545 (600-1)	560-1½ 545 (600-½)	580-2 565 (600-2)



NORFOLK, VIRGINIA

36°56'N-76°17'W

NORFOLK NS (CHAMBERS FIELD) (KNGU)

Amtd 4 26MAR20

# TACAN RWY 10

NE-3, 31 DEC 2020 to 28 JAN 2021