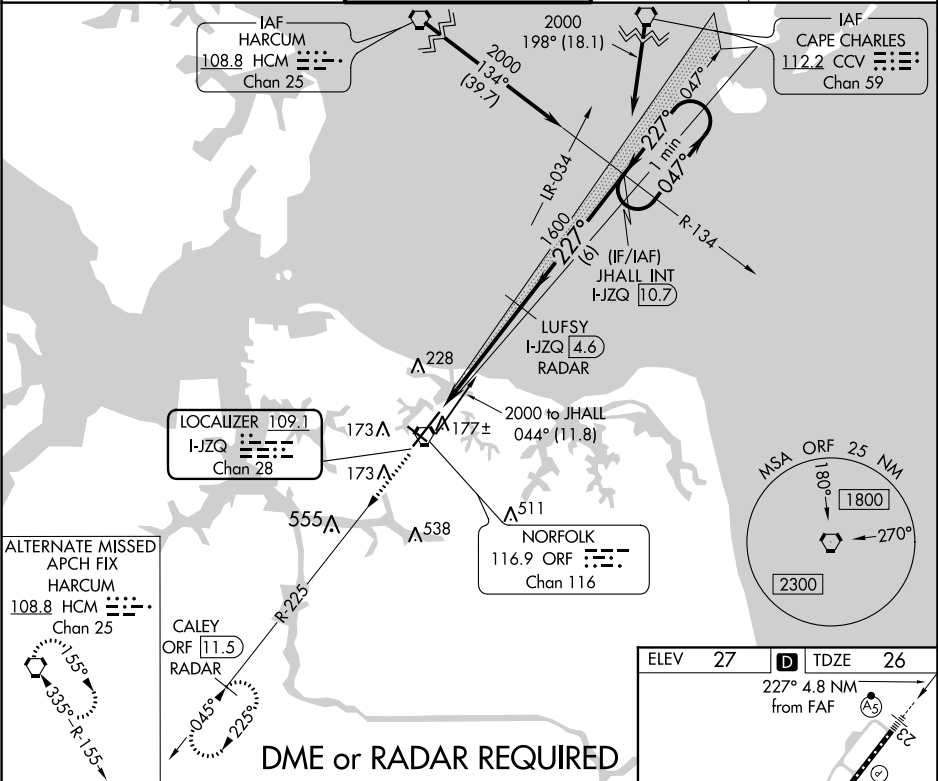


LOC/DME I-JZQ <b>109.1</b> Chan <b>28</b>	APP CRS <b>227°</b>	Rwy ldg TDZE Apt Elev <b>8995</b> <b>26</b> <b>27</b>
---	------------------------	--

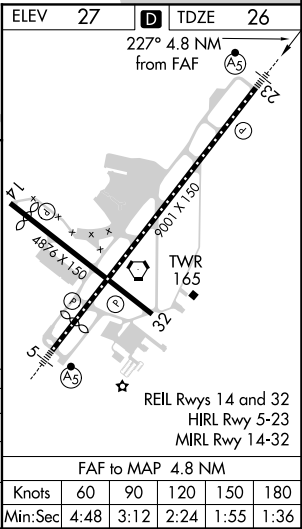
ILS or LOC RWY 23  
NORFOLK INTL (ORF)

	MALSR 	MISSED APPROACH: Climb to 2000 on ORF VORTAC R-225 to CALEY/ORF 11.5 DME/RADAR and hold.
--	-----------	--

ATIS <b>127.15</b>	NORFOLK APP CON <b>118.9 353.7</b>	NORFOLK TOWER <b>120.8 257.8</b>	GND CON <b>121.9</b>	CLNC DEL <b>118.5</b>
-----------------------	---------------------------------------	-------------------------------------	-------------------------	--------------------------



2000	ORF R-225	CALEY ORF 11.5 RADAR	LUFSY I-JZQ 4.6 RADAR	JHALL INT I-JZQ 10.7	One Minute Holding Pattern
*LOC only	I-JZQ DME ANTENNA	*I-JZQ 1.1	1600	227°	047°
	I-JZQ 0.2		1600	227°	2000
	1.2 NM	3.6 NM	6 NM		
CATEGORY	A	B	C	D	
S-ILS 23		226-1/2	200 (200-1/2)		
S-LOC 23	460-1/2	434 (500-1/2)	460-3/4	434 (500-3/4)	
CIRCLING	480-1 453 (500-1)	540-1 513 (600-1)	540-1 1/2 513 (600-1 1/2)	900-2 3/4 873 (900-2 3/4)	



NE-3, 31 DEC 2020 to 28 JAN 2021

NE-3, 31 DEC 2020 to 28 JAN 2021