

APP CRS 047°	Rwy Idg	7809
	TDZE	26
	Apt Elev	27

RNAV (RNP) Y RWY 5

NORFOLK INTL (ORF)

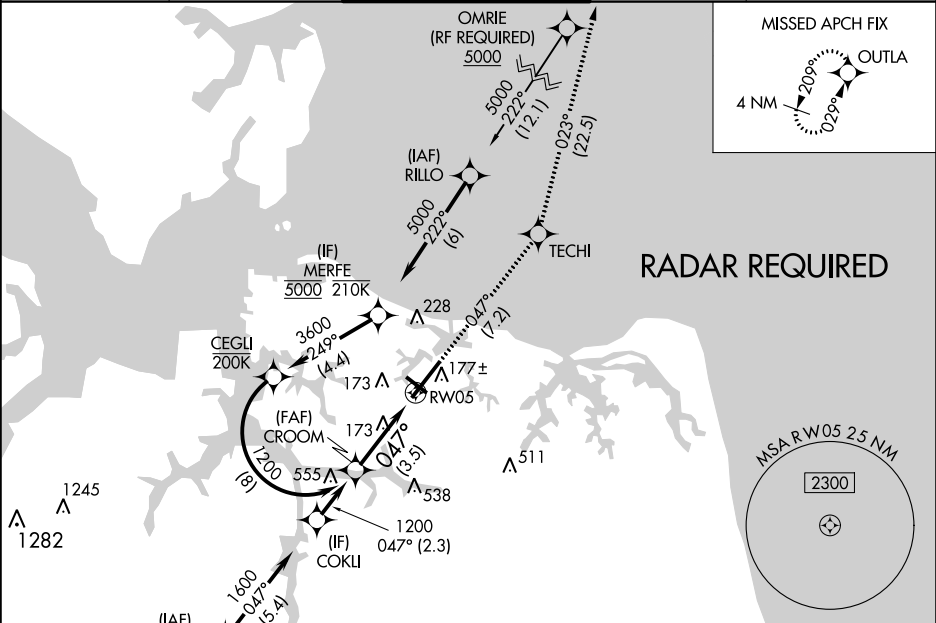
▼

For uncompensated Baro-VNAV systems, LNAV/VNAV NA below -9°C (16°F) or above 54°C (130°F). GPS required.

MALSR

MISSED APPROACH: Climb to 2000 on track 047° to TECHI and on track 023° to OUTLA and hold.

ATIS 127.15	NORFOLK APP CON 118.9 353.7	NORFOLK TOWER 120.8 257.8	GND CON 121.9	CLNC DEL 118.5
-----------------------	---------------------------------------	-------------------------------------	-------------------------	--------------------------



See planview for multiple IF locations.

2000

↑

tr 047°

TECHI

tr 023°

OUTLA

CROOM

1200

1200

047°

RW05

GP 3.00°

TCH 56

3.5 NM

CATEGORY	A	B	C	D
RNP 0.10 DA		350/26	324 (400-½)	
RNP 0.30 DA		454/40	428 (500-¾)	

AUTHORIZATION REQUIRED

ELEV 27

D

TDZE 26

047° to RW05

REIL Rwy 14 and 32

HIRL Rwy 5-23

MIRL Rwy 14-32

TWR 165

32

4976 X 150

900 X 150

5

AS