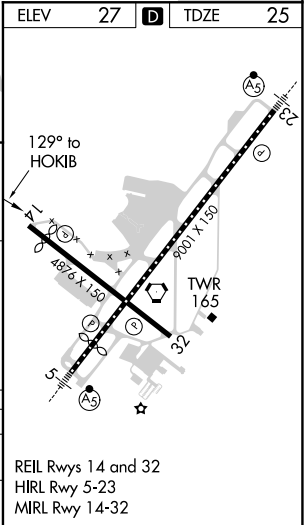
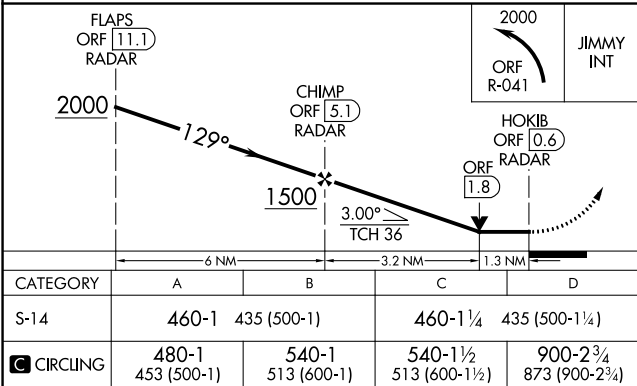
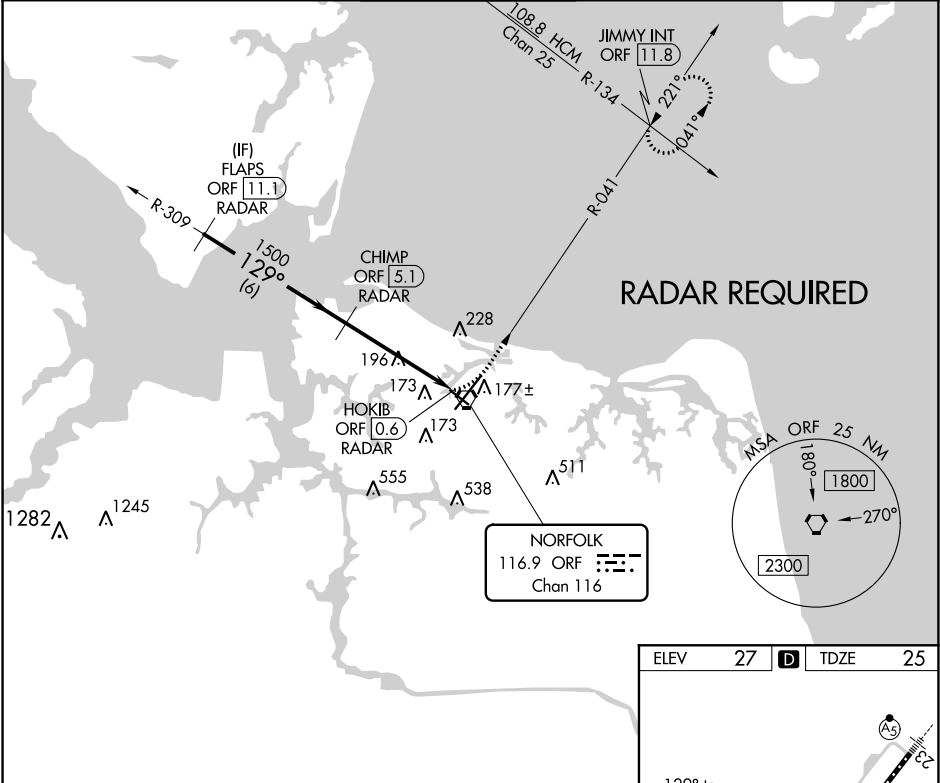


VORTAC ORF <b>116.9</b> Chan <b>116</b>	APP CRS <b>129°</b>	Rwy ldg TDZE <b>4300</b> <b>25</b> Apt Elev <b>27</b>
---	------------------------	--

VOR RWY 14  
NORFOLK INTL (ORF)

<b>⚠</b> Rwy 14 helicopter visibility reduction below ¾ SM NA. DME required.		MISSED APPROACH: Climbing left turn to 2000 on ORF VORTAC R-041 to JIMMY INT/ORF 11.8 DME and hold.		
ATIS <b>127.15</b>	NORFOLK APP CON <b>118.9 353.7</b>	NORFOLK TOWER <b>120.8 257.8</b>	GND CON <b>121.9</b>	CLNC DEL <b>118.5</b>



NE-3, 31 DEC 2020 to 28 JAN 2021

NE-3, 31 DEC 2020 to 28 JAN 2021