

PATUXENT RIVER, MARYLAND

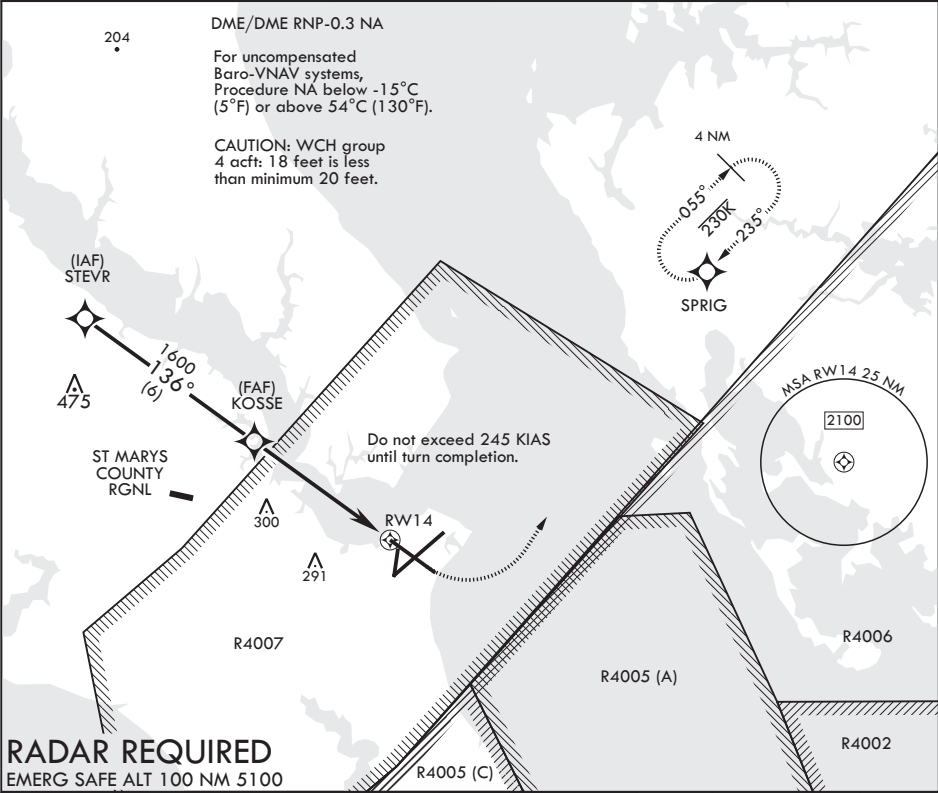
RNAV (GPS) RWY 14

APCH CRS	Rwy Idg	9732
136°	TDZE	27
	Arprt Elev	39

AL-314 (USN) PATUXENT RIVER NAS (TRAPNELL FLD) (KNHK)

MISSED APPROACH: Climb to 500 then climbing left turn to 2500 direct SPRIG, do not exceed 245 KIAS until turn completion and hold.	
---	--

ATIS 322.425	APP CON/DEP CON 121.0 250.3	TOWER 123.7 343.65	GND CON 120.6 336.4	CLNC DEL 135.2 316.125	ASR/PAR
-----------------	--------------------------------	-----------------------	------------------------	---------------------------	---------



STEVR	500	2500	SPRIG	ELEV 39	TDZE 27
2500	136°	KOSSE	*LNAV only		
GP 3.00°	1600	*1.4 NM to RWY 14	RWY 14		
TCH 42	4.8 NM				
CATEGORY	A	B	C	D	
LNAV/VNAV DA	374-1 1/8 347 (400-1 1/8)	385-1 1/4 358 (400-1 1/4)	393-1 1/4 366 (400-1 1/4)	404-1 1/4 377 (400-1 1/4)	
LNAV MDA	500-1 473 (500-1)	500-1 3/8 473 (500-1 3/8)	500-1 3/8 473 (500-1 3/8)	500-1 3/8 473 (500-1 3/8)	
CIRCLING	560-1 521 (600-1)	600-1 561 (600-1)	620-1 1/2 581 (600-1 1/2)	660-2 621 (700-2)	
TDZL/CL Rwy 6 HIRL Rwy 6-24, 14-32					

PATUXENT RIVER, MARYLAND

38°17'N - 76°25'W PATUXENT RIVER NAS (TRAPNELL FLD) (KNHK)

Amdt 1 09NOV17

RNAV (GPS) RWY 14

NE-3, 31 DEC 2020 to 28 JAN 2021

NE-3, 31 DEC 2020 to 28 JAN 2021